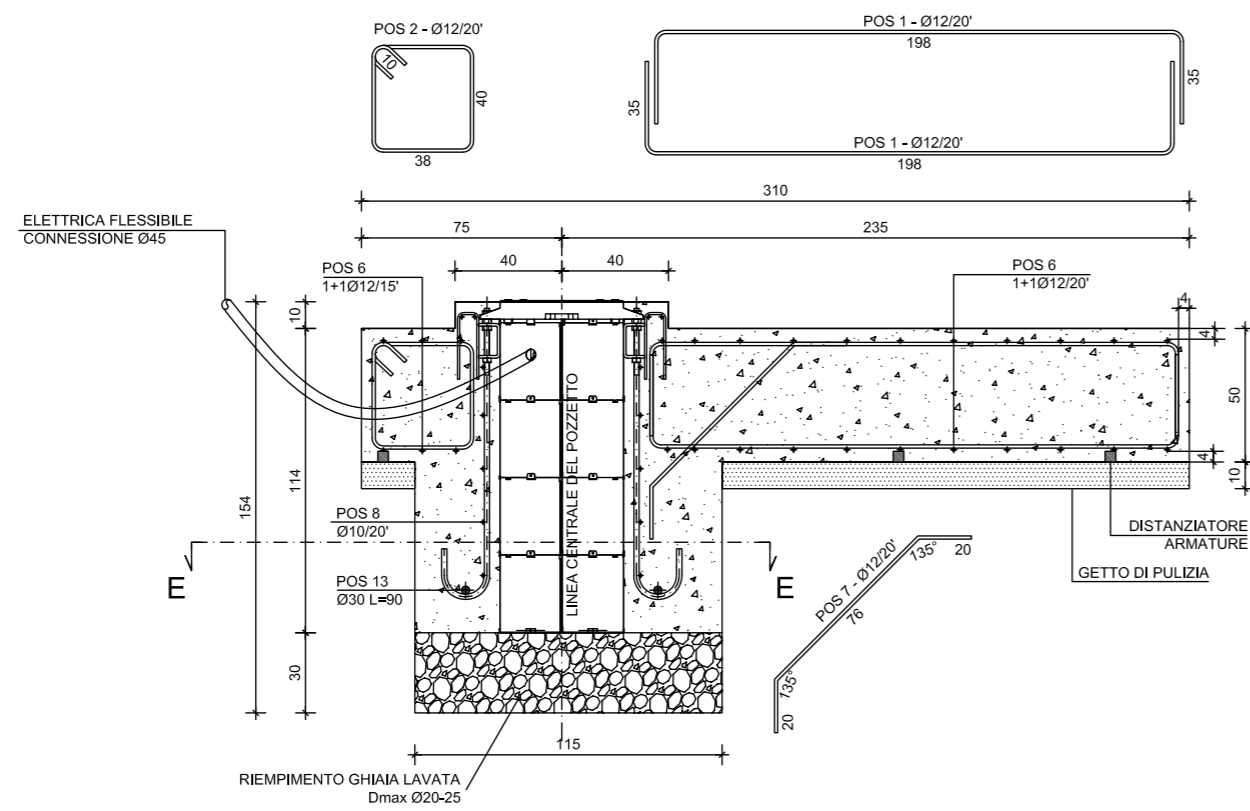
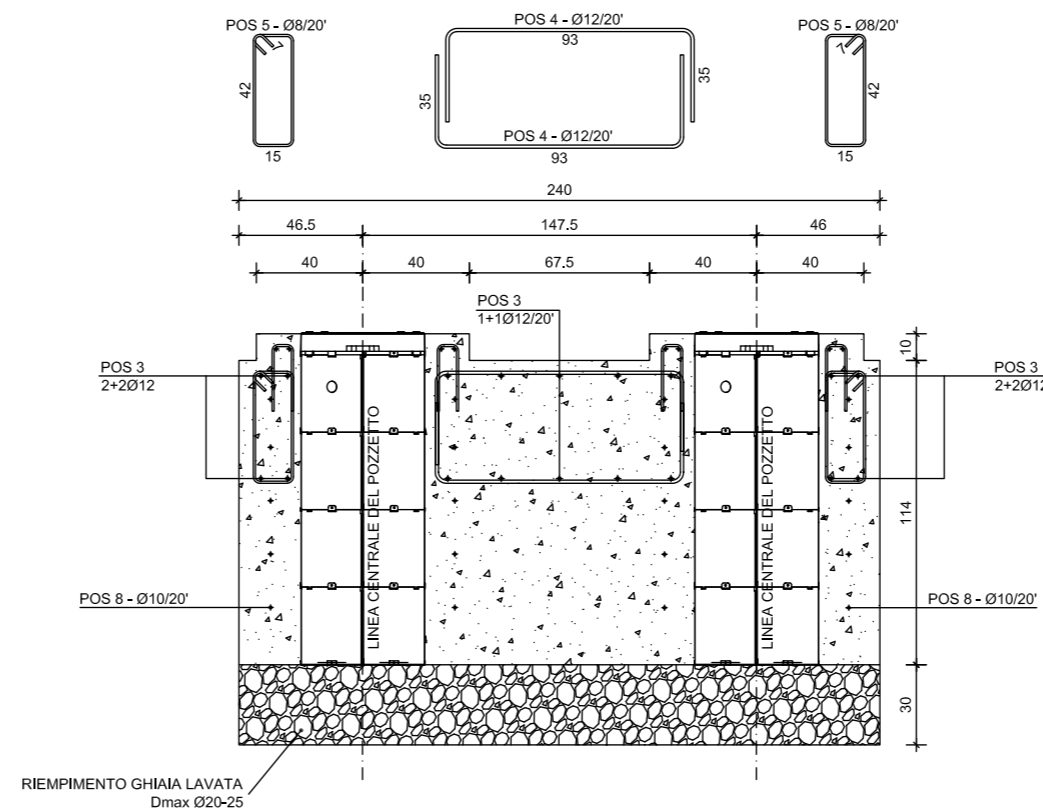


**J275 HA 2K20**  
IT

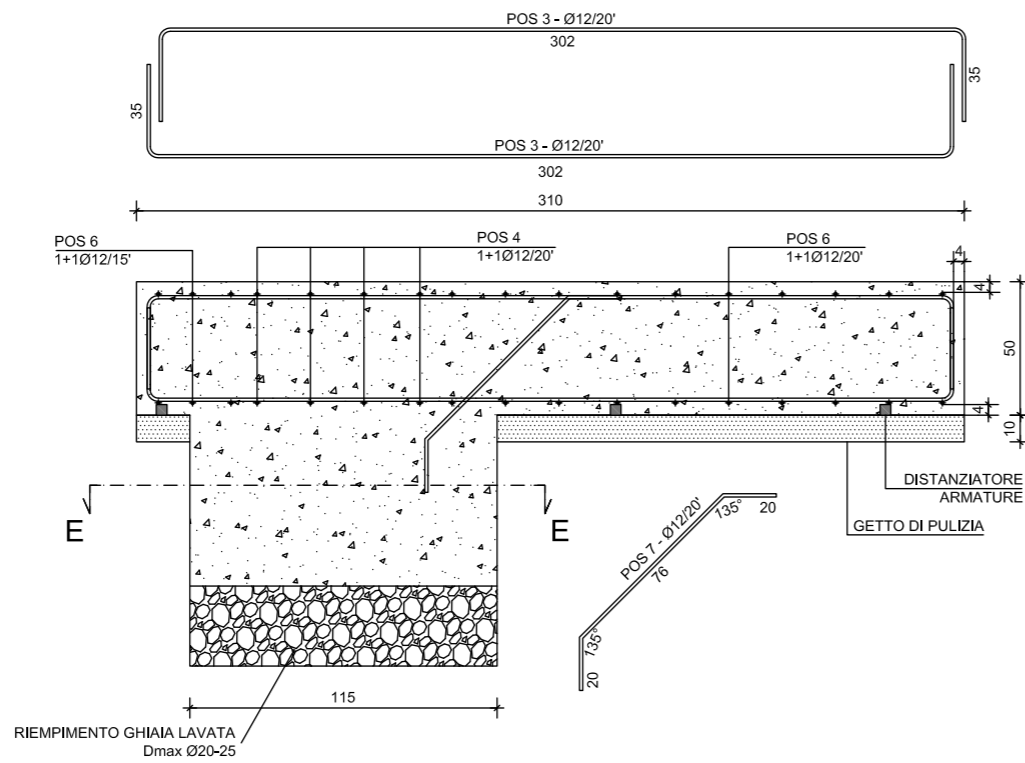
**SEZIONE A-A**



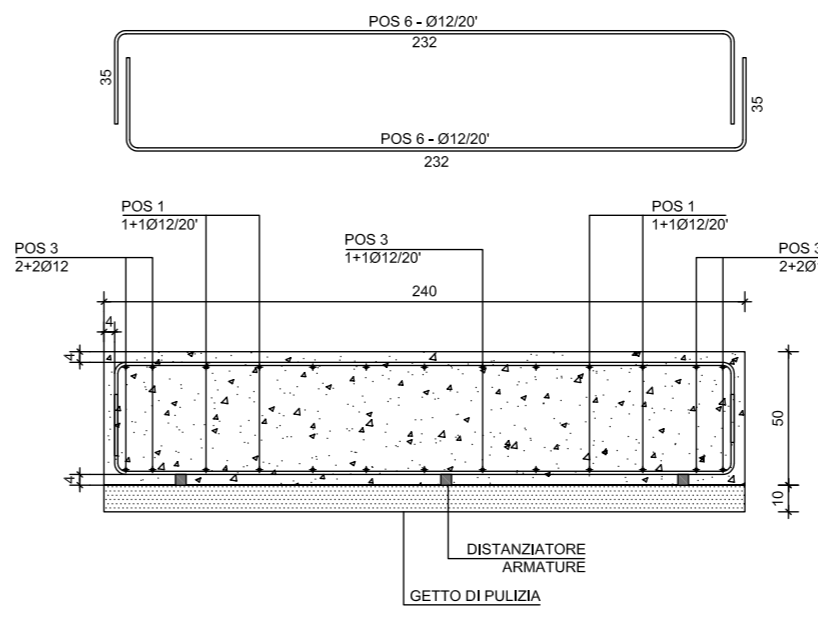
**SEZIONE C-C**



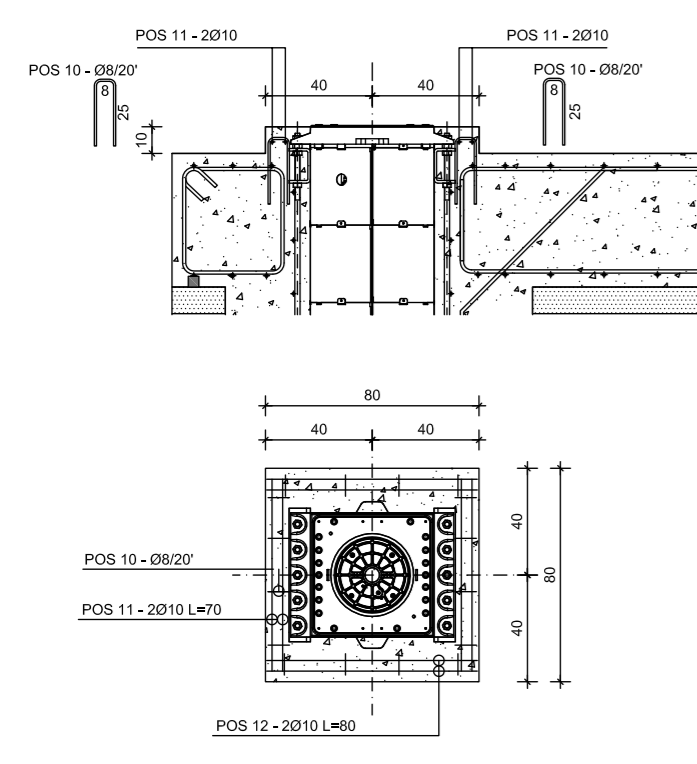
**SEZIONE B-B**



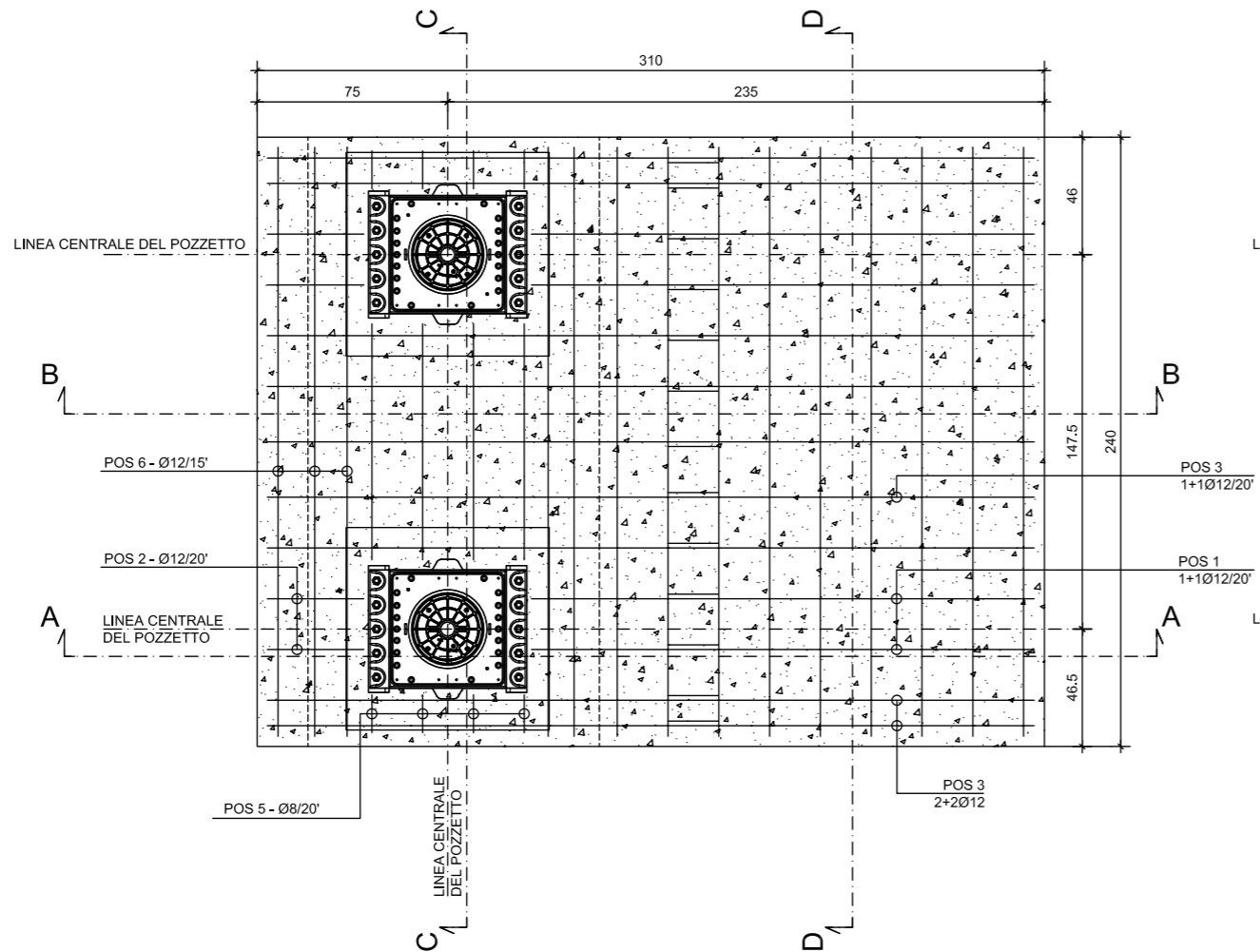
**SEZIONE D-D**



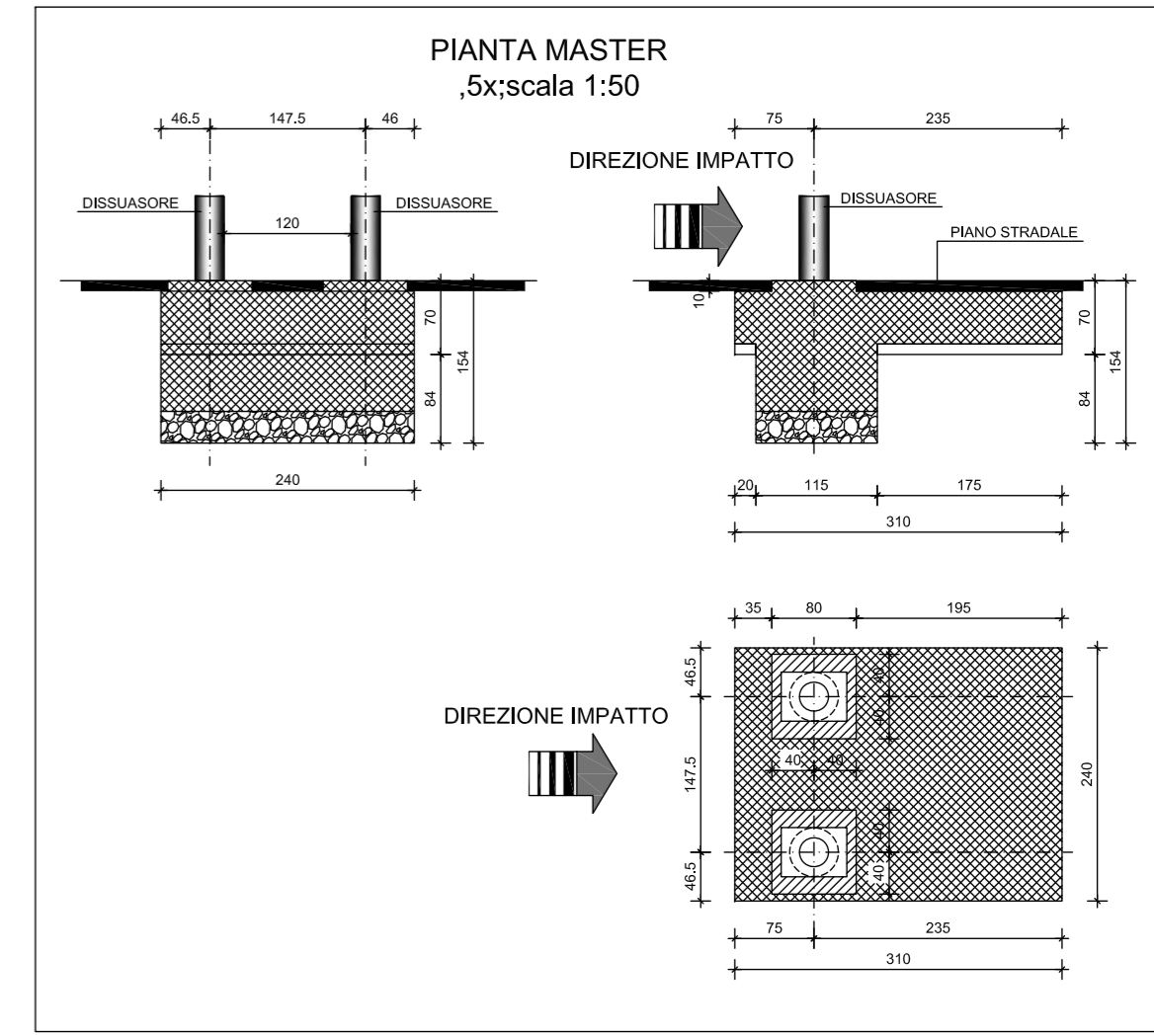
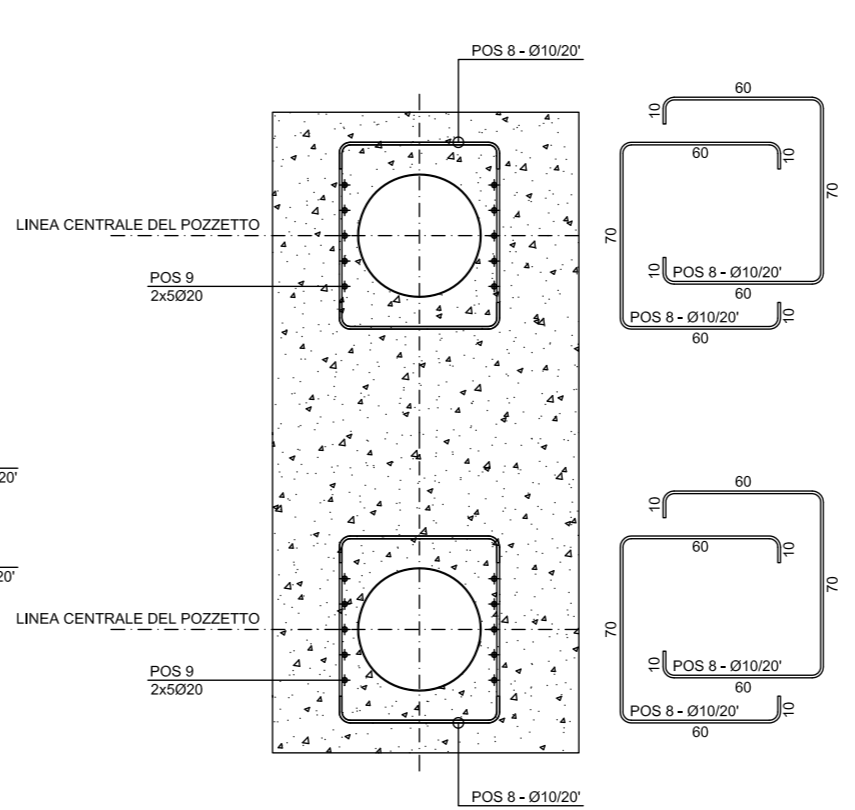
**POSIZIONE ARMATURE COLLARE SUPERIORE**



**VISTA PIANO**



**SEZIONE E-E**



DISTINTA DELLE ARMATURE				
pos.	n.	φ	L (cm)	Peso (kg)
1	8	12	268	19,03
2	4	12	176	6,25
3	18	12	372	59,45
4	8	12	163	11,58
5	8	8	128	4,04
6	28	12	302	75,07
7	13	12	116	13,39
8	20	10	210	25,89
9	20	20	135	66,59
10	32	8	58	7,32
11	8	10	70	3,45
12	8	10	80	3,95
13	4	30	90	19,98
peso totale dell'armatura				296,01

VOLUME DEL CALCESTRUZZO		
per getto di pulizia	mc	0,46
per fondamenta	mc	5,27

VOLUME DELLO SCAVO	
mc	7,50

VOLUME DELLA GHIAIA	
mc	0,83

PESO DEL POZZETTO	
kg	85,00

MATERIALI + SPECIFICHE								
CALCESTRUZZO								
Classe di resistenza	Tipo di cemento	acqua/cemento rapporto (peso)	Consistenza slump (mm)	Esposizione classe (EN206-1)	gruppo max. diametro	armature min. carter (EC2)	additivi	
ESPOSIZIONE MODERATA	C25/30	Portland 325/425	0.60	S4-160/210	XC2	20-25 mm	4,0 cm	fluidificanti
GRAVE ESPOSIZIONE	C32/40	Portland 325/425	0.50	S4-160/210	XC2+XD2	20-25 mm	4,0 cm	fluidificanti
CALCESTRUZZO PER GETTO DI PULIZIA								
Classe di resistenza	Tipo di cemento	acqua/cemento rapporto (peso)	Consistenza slump (mm)	Esposizione classe (EN206-1)	gruppo max. diametro	armature min. carter (EC2)	additivi	
C12/15	Portland 325			X0	20-25 mm			
REGOLE DI MATURAZIONE (UNI EN 13670-1:02)								
Tempo di rimozione della cassaforma				48 ore				
Max resistenza				28 giorni				
ARMATURE								
FERRO B500C - B450C o N20								
Distanza min. tra le barre = 35 mm								

IL COPRIFERRO DEVE ESSERE GARANTITO DA APPOSITI ELEMENTI DISTRANZIATORI

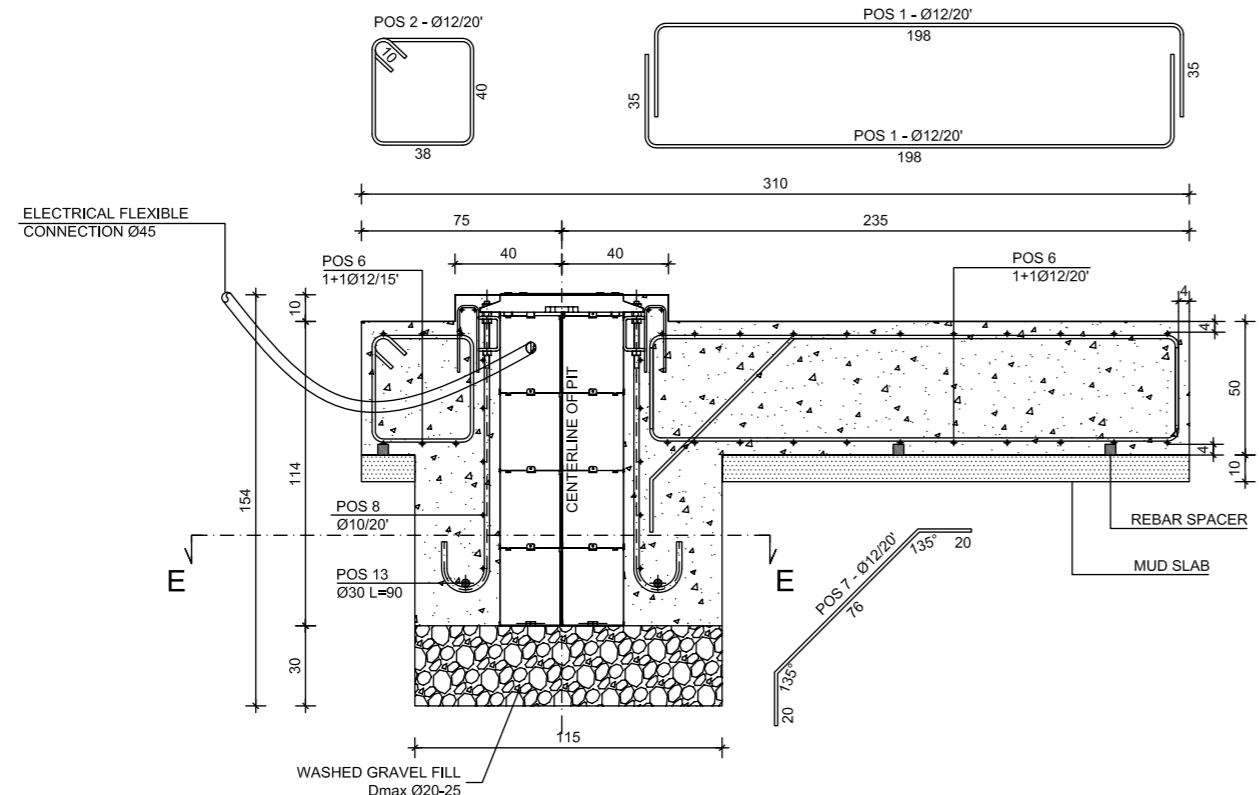
TUTTE LE DIMENSIONI DEVONO ESSERE CONTROLLATE SUL CANTIERE PRIMA DI INIZIARE I LAVORI

**FAAC** Via Calari 10, Zola Predosa, Bologna, Italy  
Tel: +39 051-61724 Fax: +39 051-0957820

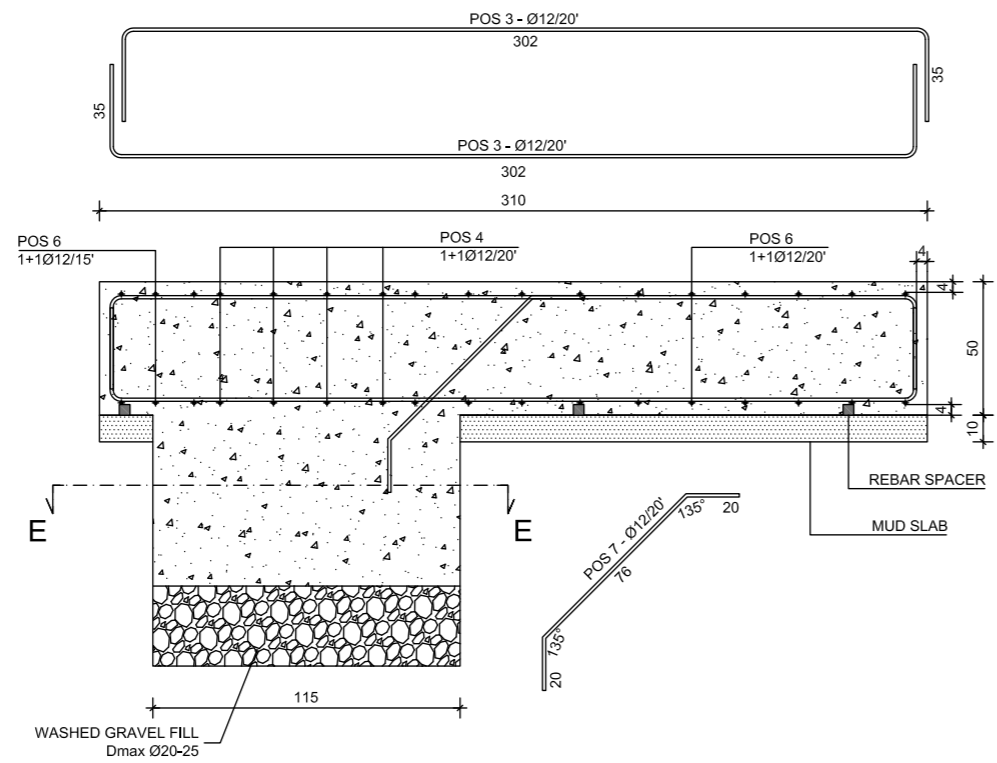
Description	Code	Revision
<b>J275 HA 2K20 FONDAMENTA POZZETTO</b>	<b>532379</b>	<b>A</b>

J275 HA 2K20  
EN

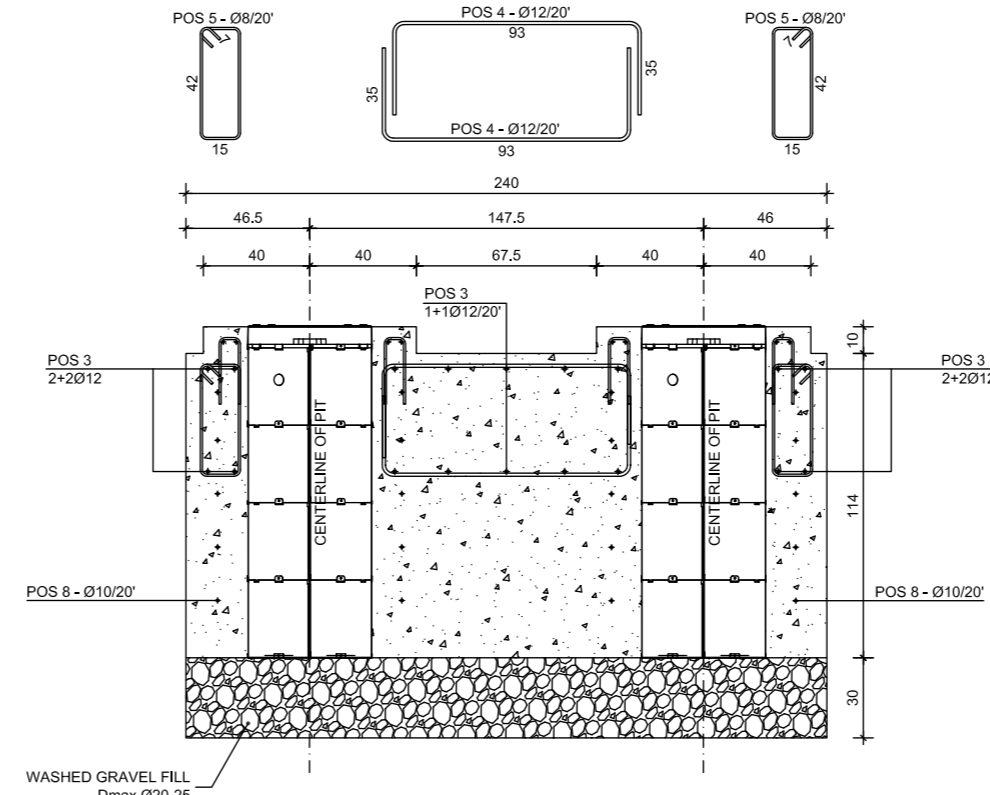
SECTION A-A



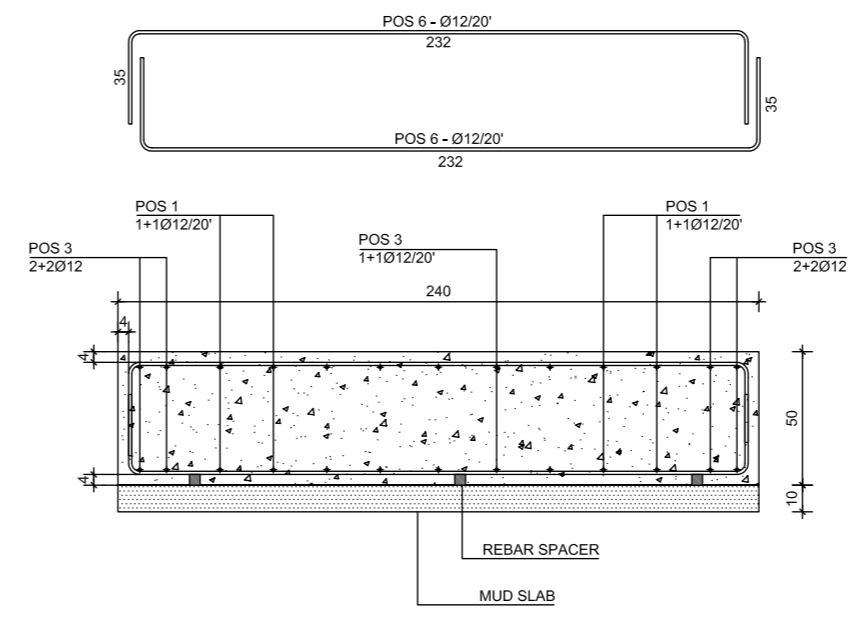
SECTION B-B



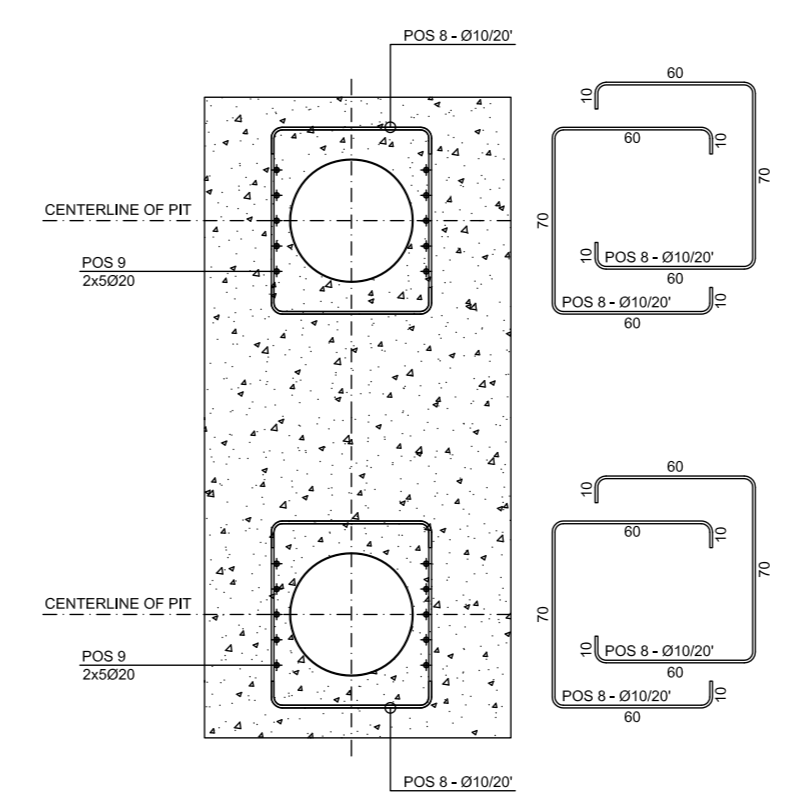
SECTION C-C



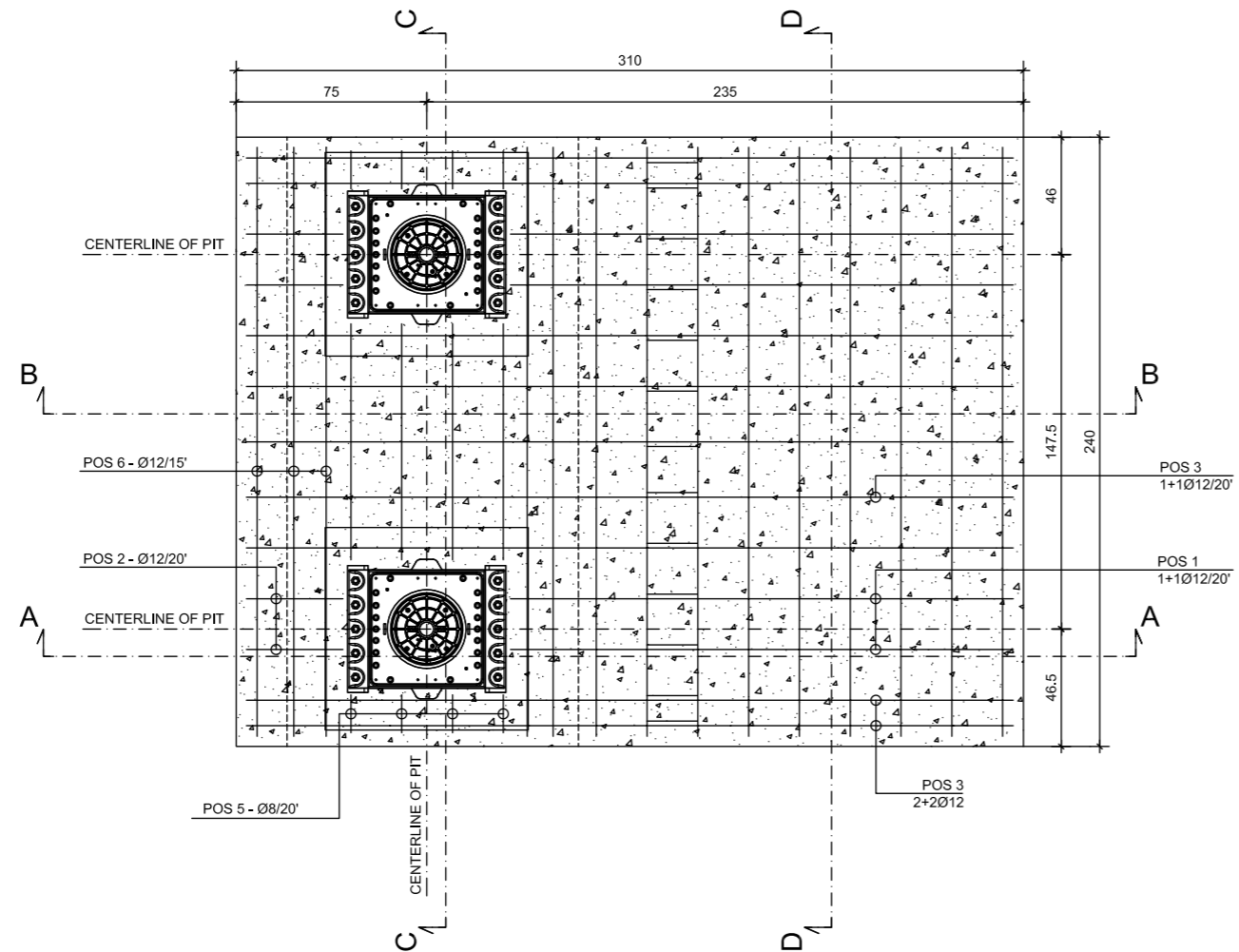
SECTION D-D



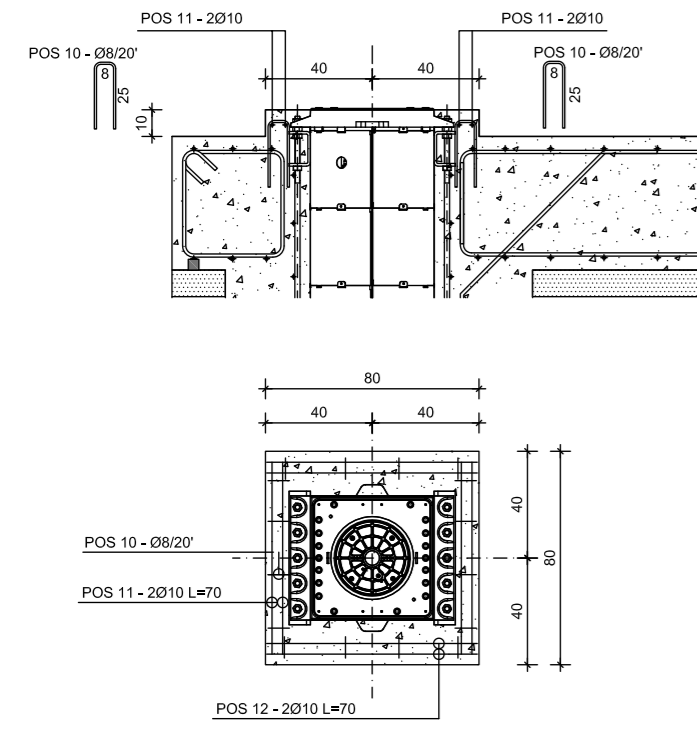
SECTION E-E



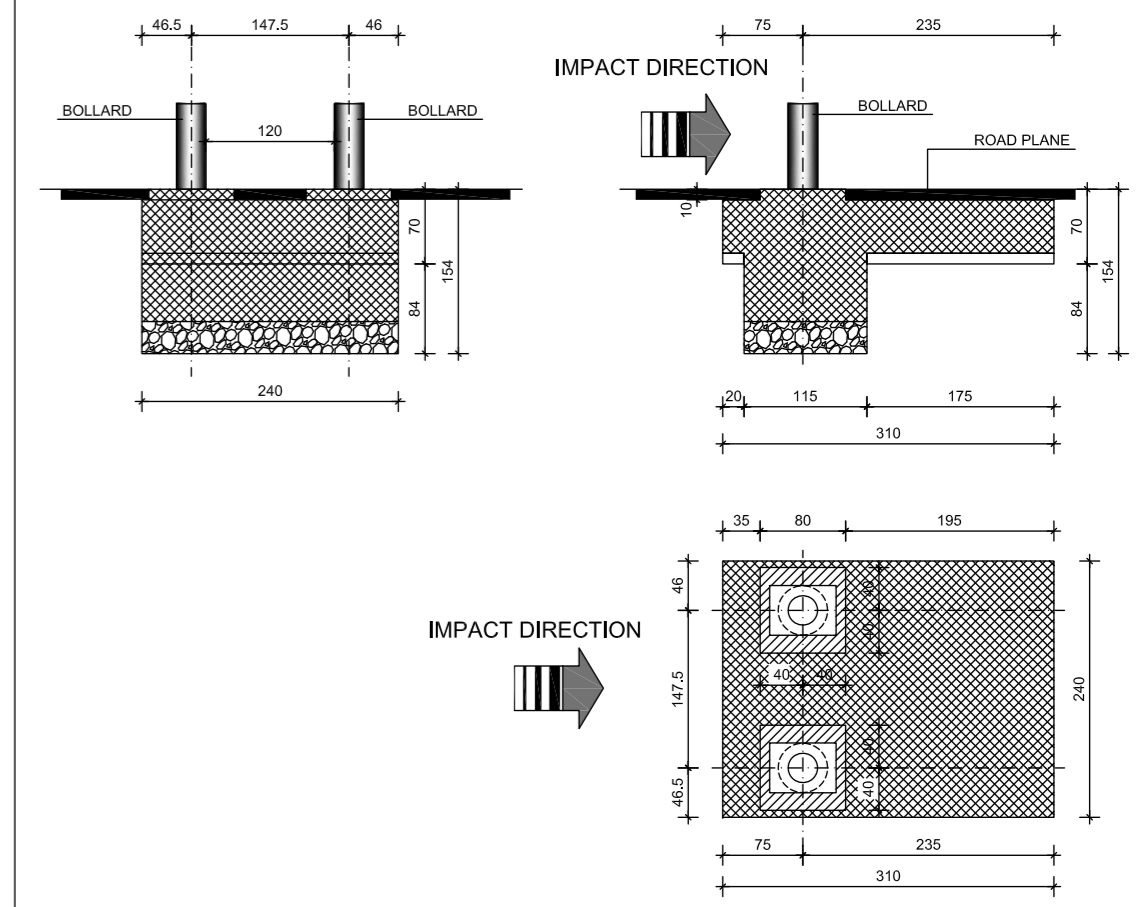
PLANE VIEW



TOP COLLAR REBAR POSITION



MASTER PLAN



BILL OF REBAR

pos.	n°	φ	L (cm)	W (kg)
1	8	12	268	19,03
2	4	12	176	6,25
3	18	12	372	59,45
4	8	12	163	11,58
5	8	8	128	4,04
6	28	12	302	75,07
7	13	12	116	13,39
8	20	10	210	25,89
9	20	20	135	66,59
10	32	8	58	7,32
11	8	10	70	3,45
12	8	10	70	3,45
13	4	30	90	19,98
total weight of rebar				295,52

VOLUME OF CONCRETE

	for mud slab	mc	0,46
	for foundation	mc	5,27

VOLUME OF DIGGING

	mc	7,50
--	----	------

VOLUME OF GRAVEL

	mc	0,83
--	----	------

WEIGHT OF THE PIT

	Kg	85,00
--	----	-------

MATERIALS + SPECIFICATION

CONCRETE								
	Resistance class	Type of cement	water/cement ratio (weight)	Consistence slump (mm)	Exposure class (EN206-1)	max. aggregate diameter	min. rebar cover (EC2)	additives
MODERATE EXPOSURE	C25/30	Portland 325/425	0.60	S4-160/210	XC2	20-25 mm	4.0 cm	thinner
SEVERE EXPOSURE	C32/40	Portland 325/425	0.50	S4-160/210	XC2+XD2	20-25 mm	4.0 cm	thinner
MUD SLAB CONCRETE	C12/15	Portland 325			X0	20-25 mm		

MATURATION RULES (UNI EN 13670-1:02)  
 Formwork removal time 48 hours  
 Max resistance 28 days

REBAR	
IRON B500C - B450C or N20	
Min. distance between bars = 35 mm	

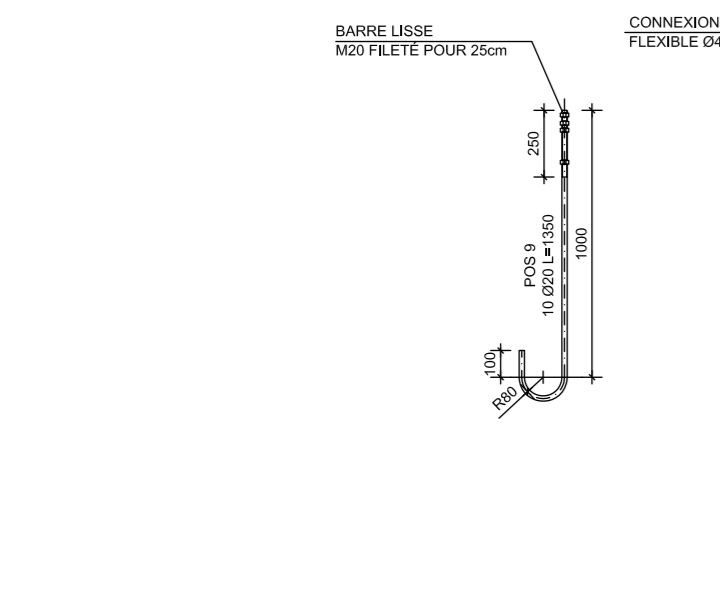
CONCRETE COVERS MUST BE GUARANTEED BY SUITABLE MESH SPACERS

ALL DIMENSIONS MUST BE CHECKED ON SITE BEFORE TO BEGINNING WORK

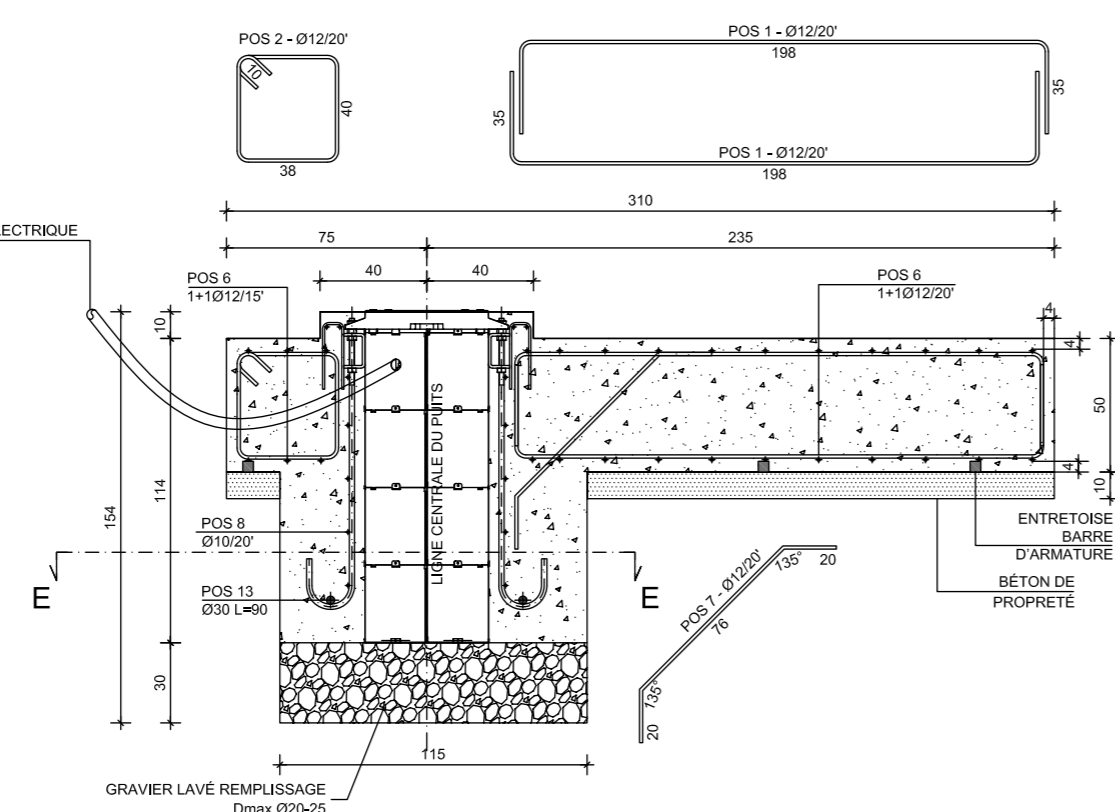


Via Calari 10, Zola Predosa, Bologna, Italy  
Tel: 051-6172411 Fax: 051-758518

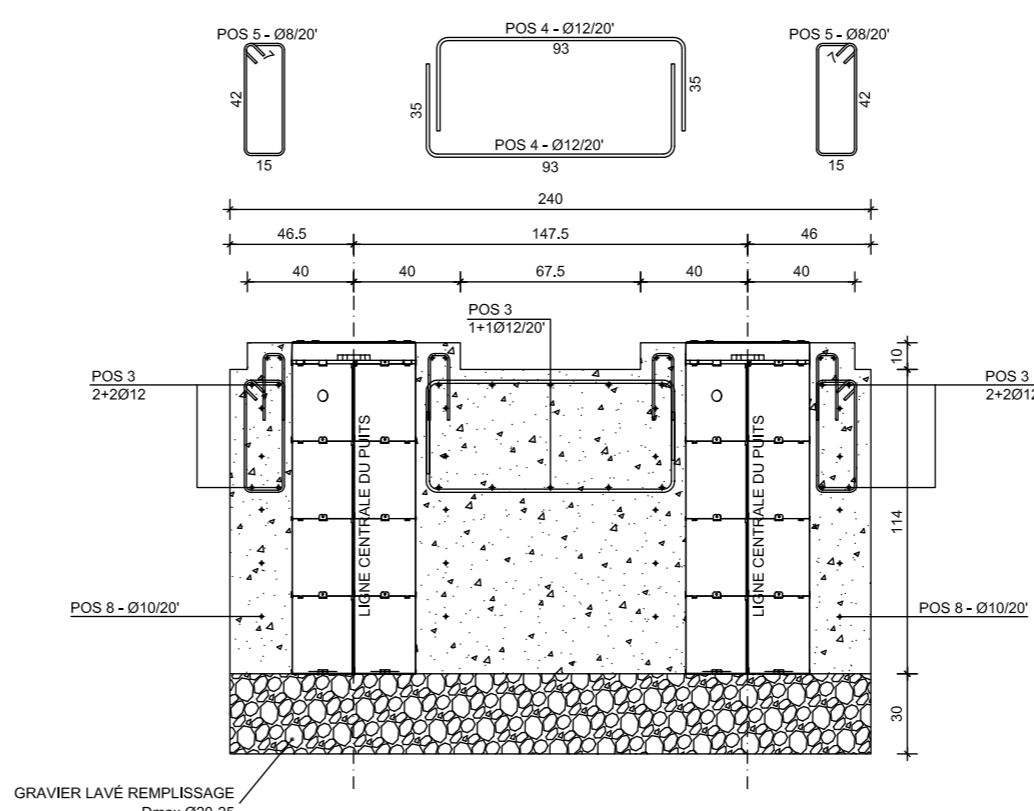
Description	Code	Revision
J275 HA 2K20 PIT FOUNDATION	532379	A



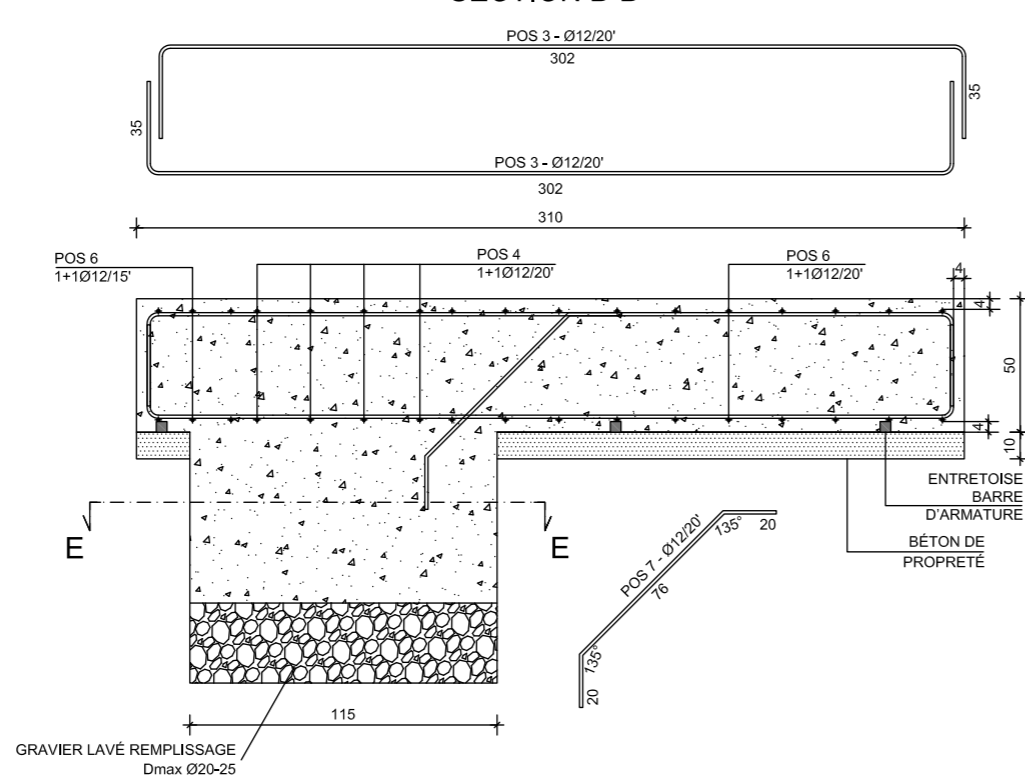
**SECTION A-A**



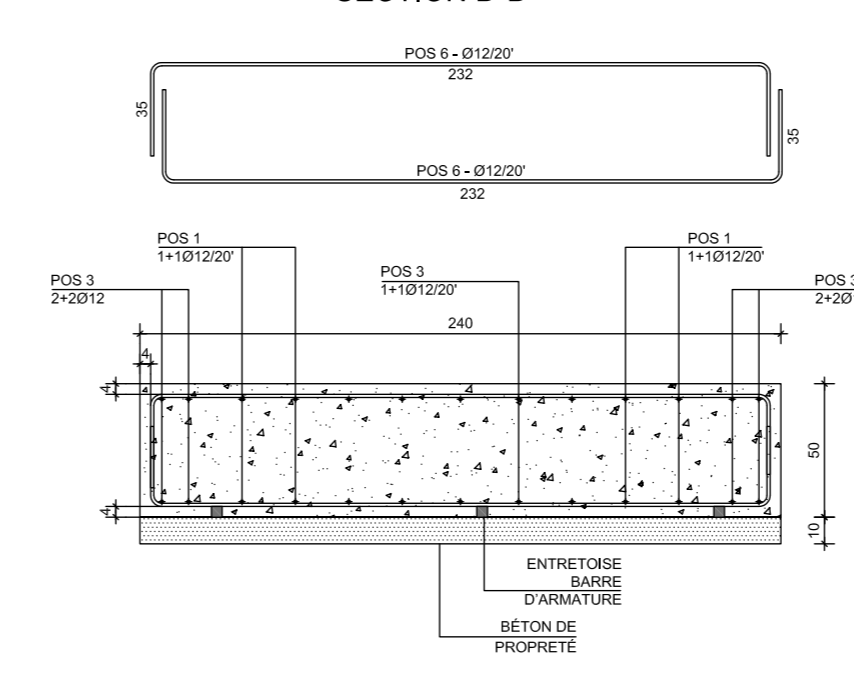
**SECTION C-C**



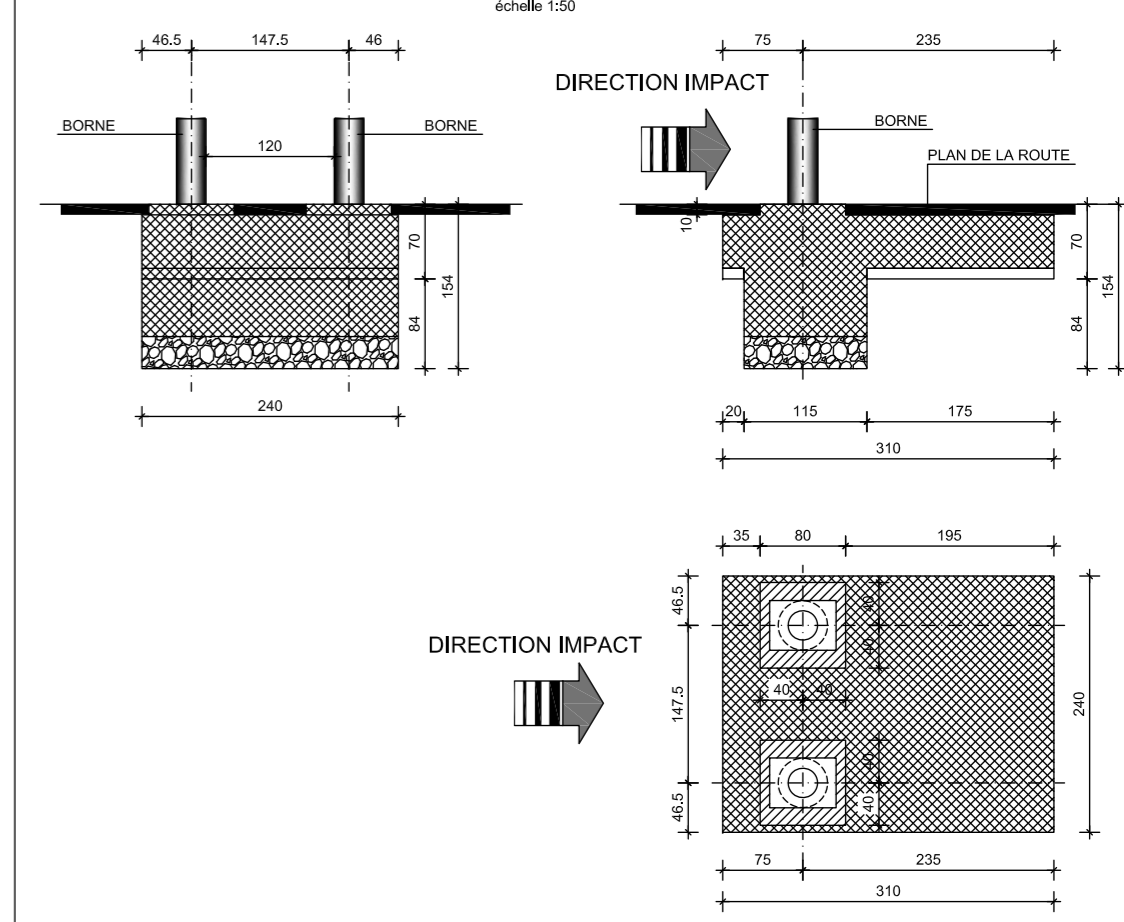
**SECTION B-B**



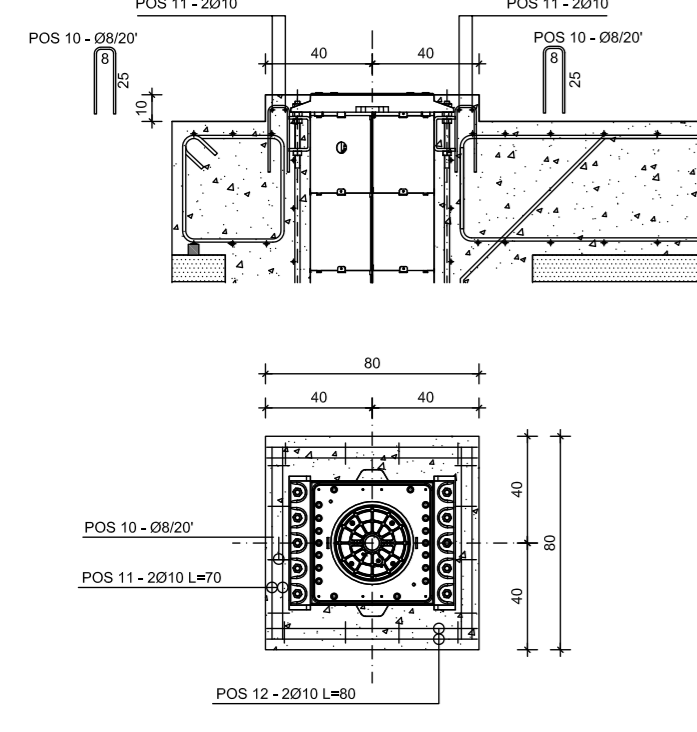
**SECTION D-D**



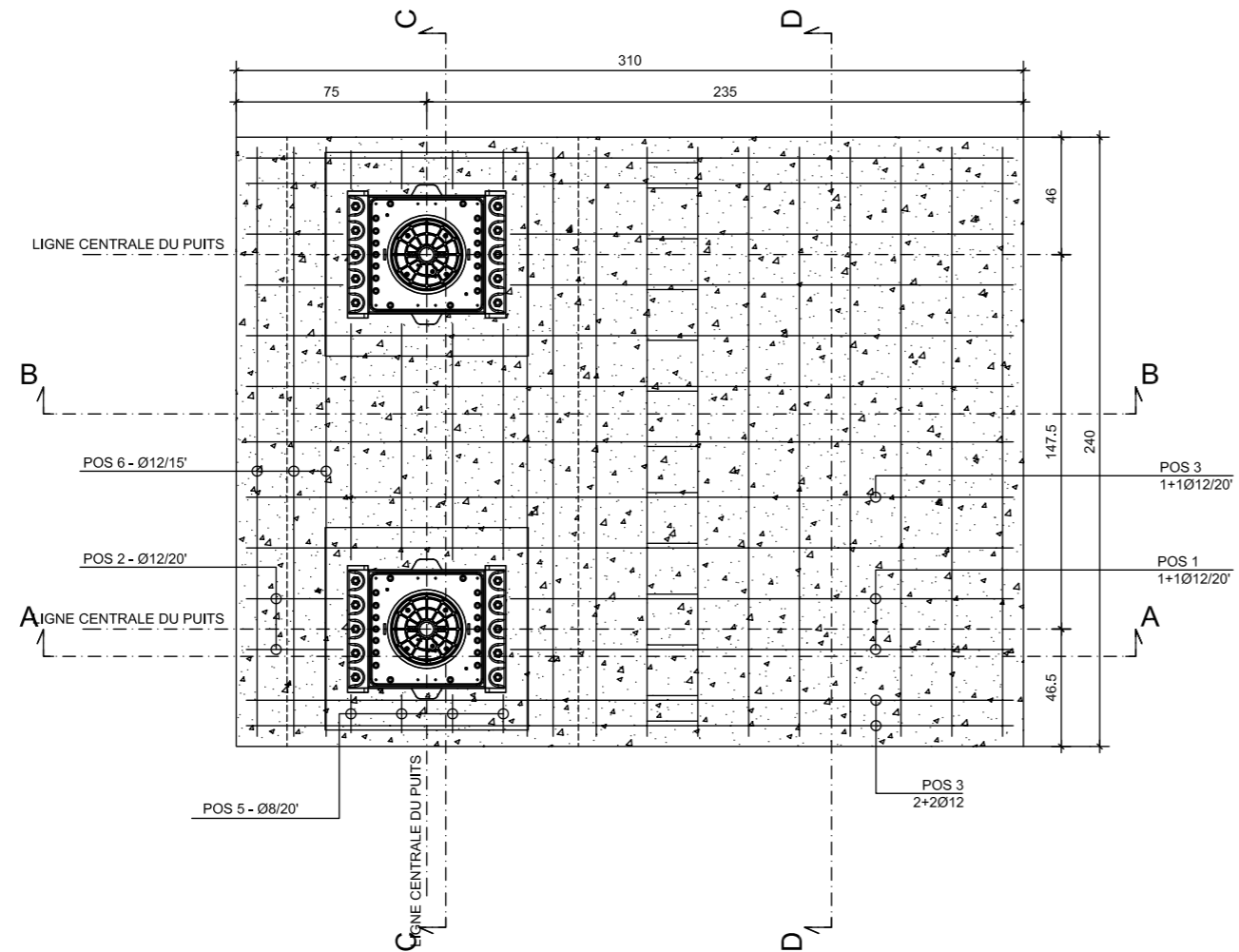
**PLAN GÉNÉRAL**  
échelle 1:50



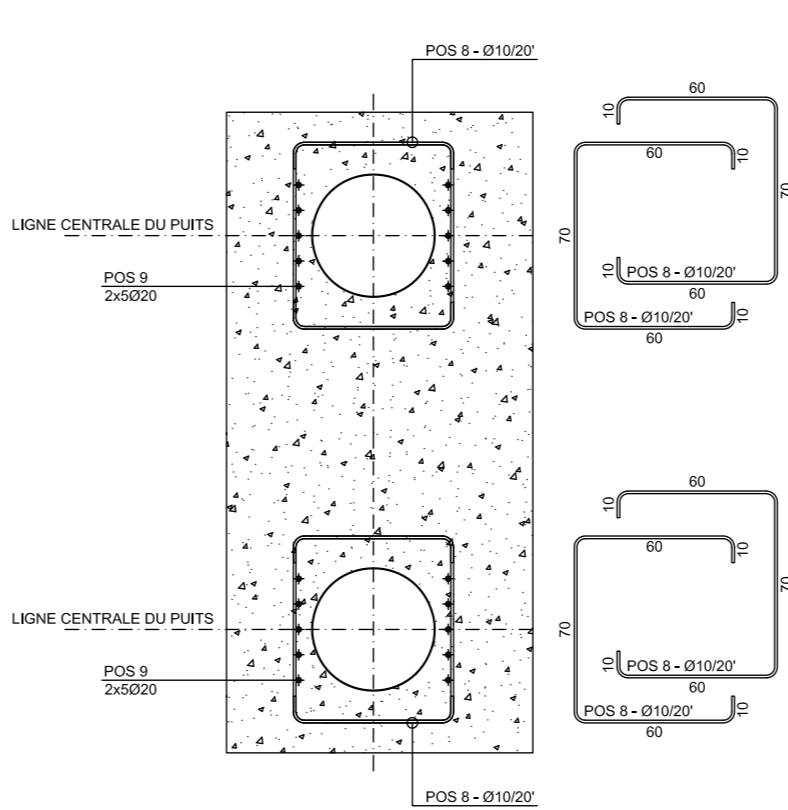
**POSITION DE LA BARRE D'ARMATURE SUPÉRIEURE DU COL**



**PLANIMÉTRIE**



**SECTION E-E**



**BORDEREAU DE BARRE D'ARMATURE**

pos.	n°	φ	L (cm)	W (kg)
1	8	12	268	19,03
2	4	12	176	6,25
3	18	12	372	59,45
4	8	12	163	11,58
5	8	8	128	4,04
6	28	12	302	75,07
7	13	12	116	13,39
8	20	10	210	25,89
9	20	20	135	66,59
10	32	8	58	7,32
11	8	10	70	3,45
12	8	10	80	3,95
13	4	30	90	19,98
pois total de la barre d'armature				296,01

**VOLUME DU BÉTON**

	m³	
pour béton de propreté	0,46	
pour fondation	5,27	

**VOLUME DU CREUSEMENT**

m³	7,50
----	------

**VOLUME DE GRAVIER**

m³	0,83
----	------

**POIDS DU PUIS**

Kg	85,00
----	-------

**MATÉRIAUX + SPÉCIFICATION**

**BÉTON**

	Classe de résistance	Type de ciment	Taux eau/ciment (pois)	Creux caractéristique (mm)	Classe Exposition (EN206-1)	Diamètre max. agrégat	Revêtement (forme d'armature min, (EC2)	additifs
EXPOSITION MODÉRÉE	C25/30	Portland 325/425	0.60	S4-160/210	XC2	20-25 mm	4.0 cm	plus mince
EXPOSITION GRAVE	C32/40	Portland 325/425	0.50	S4-160/210	XC2+XD2	20-25 mm	4.0 cm	plus mince
BÉTUN DE PROPRETÉ	C12/15	Portland 325			X0	20-25 mm		

**RÈGLES DE MATURATION (UNI EN 13670-1:02)**  
Temps de retrait du coffrage: 48 heures  
Résistance PMax: 28 jours

**ACIER B500C - B450C ou N20**  
Distance min. entre les barres = 35 mm

LES REVÊTEMENTS EN BÉTON DOIVENT ÊTRE GARANTIS PAR DES ENTRETOISES EN MAILLE APPROPRIÉES

TOUTES LES DIMENSIONS DOIVENT ÊTRE VÉRIFIÉES SUR PLACE AVANT DE COMMENCER LES TRAVAUX

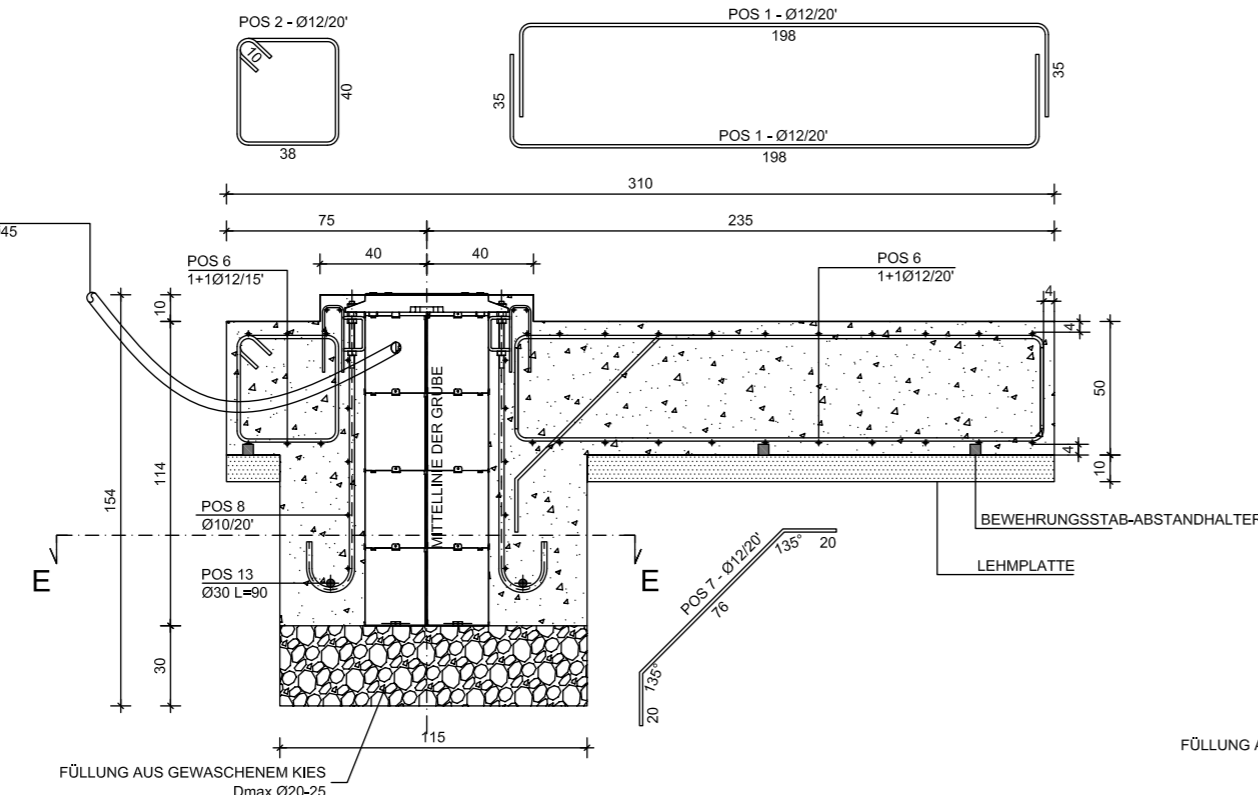


Via Calari 10, Zola Predosa, Bologna, Italy  
Tel: +39 051-61724 Fax: +39 051-0957820

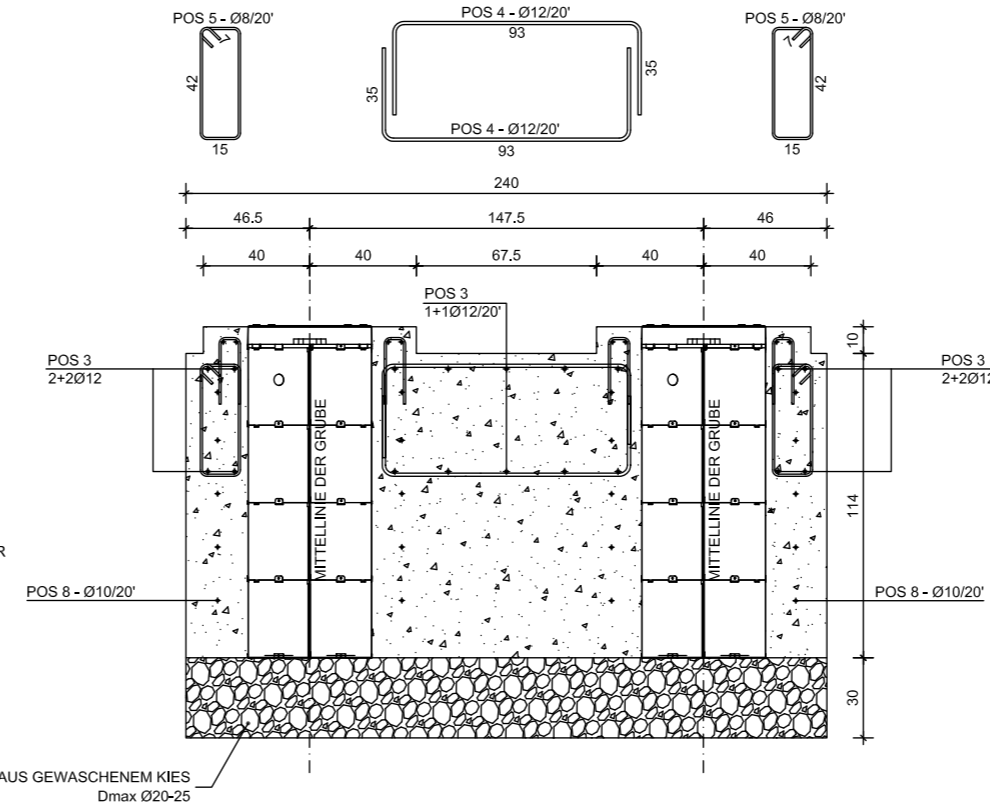
Description	Code	Revision
J275 HA 2K20 DIMENSION DU PUIT	532379	A

J275 HA 2K20  
DE

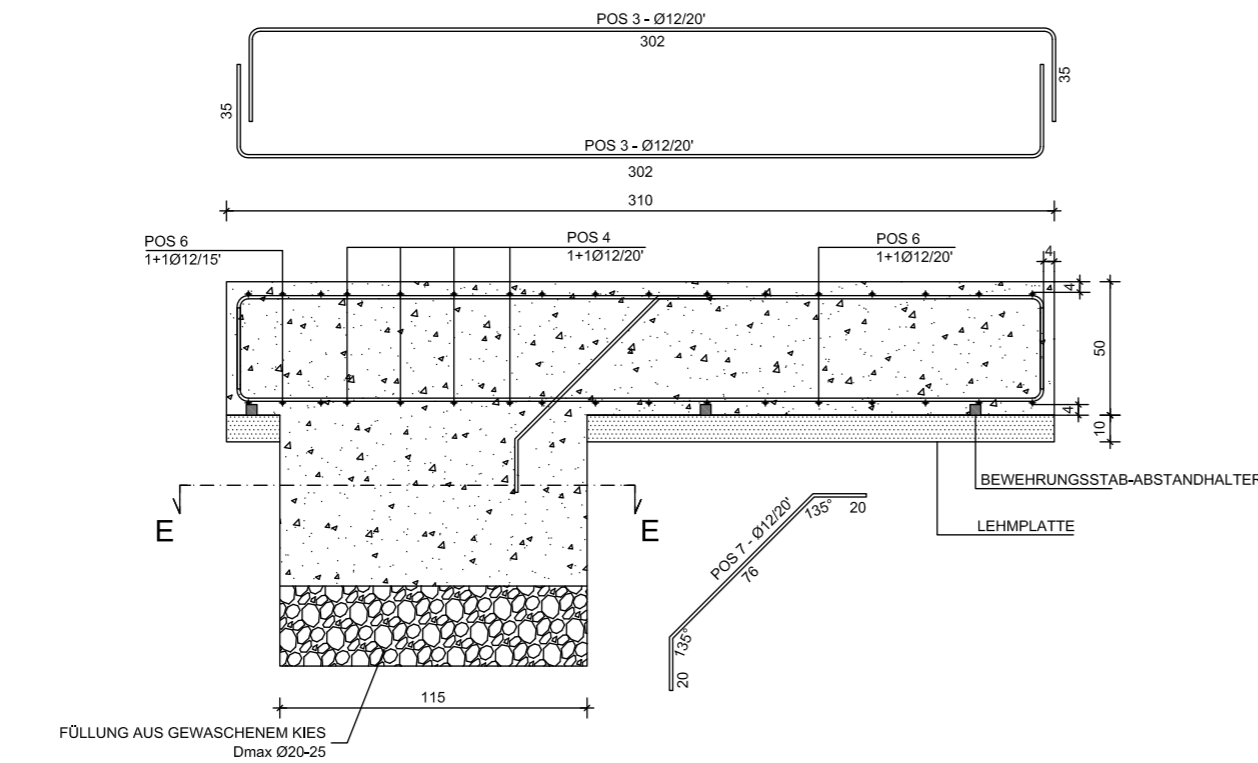
ABSCHNITT A-A



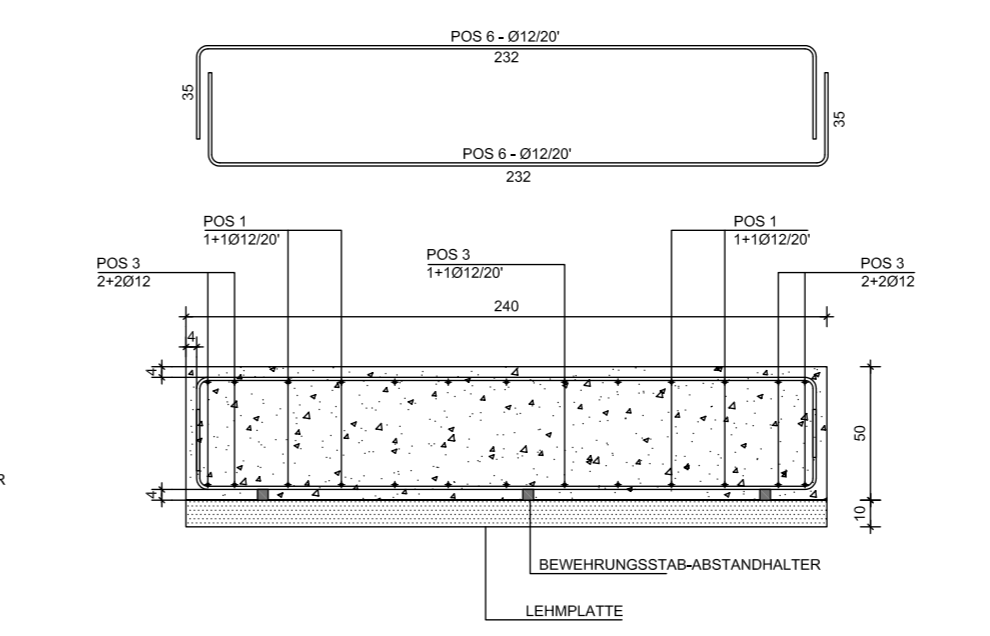
ABSCHNITT C-C



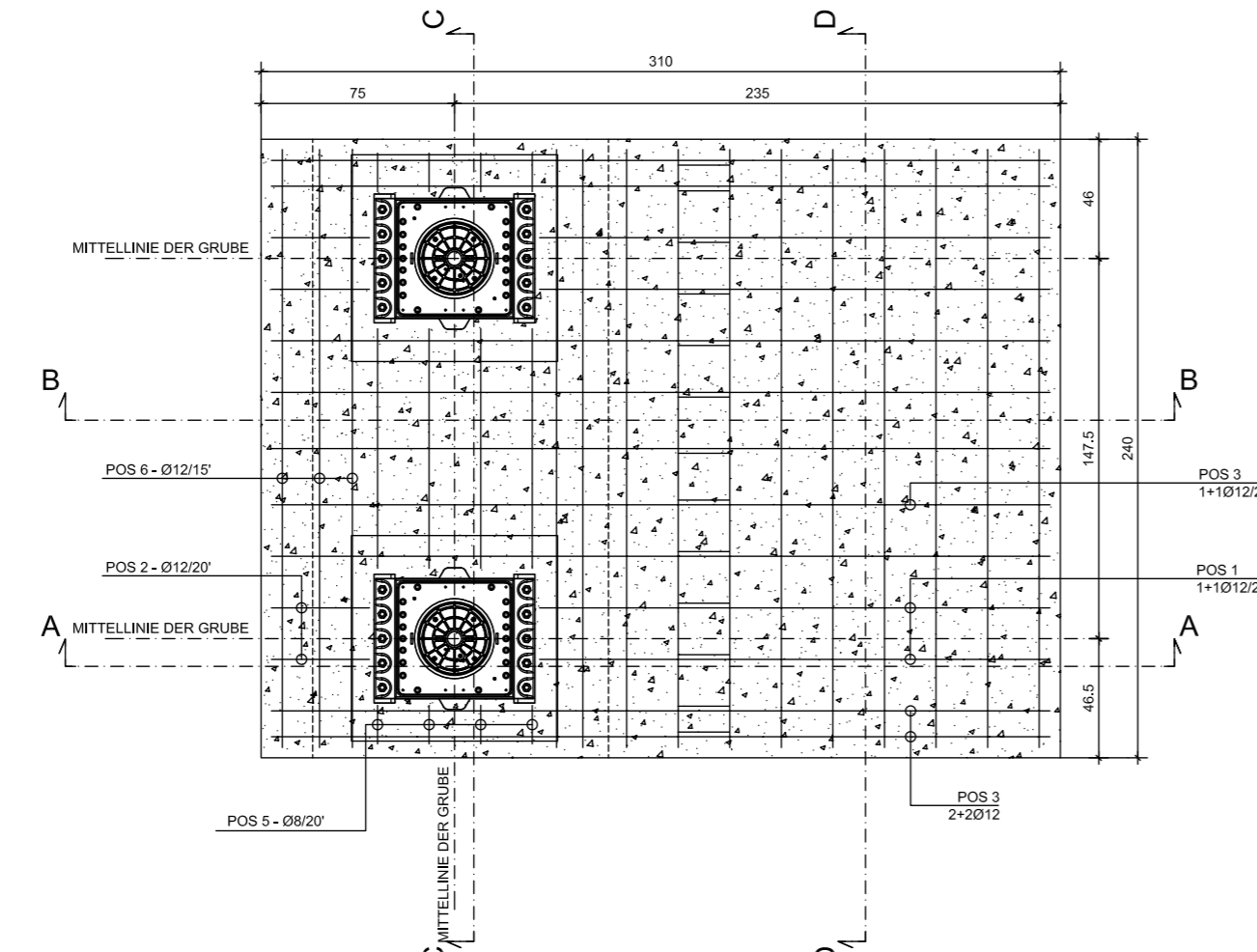
ABSCHNITT B-B



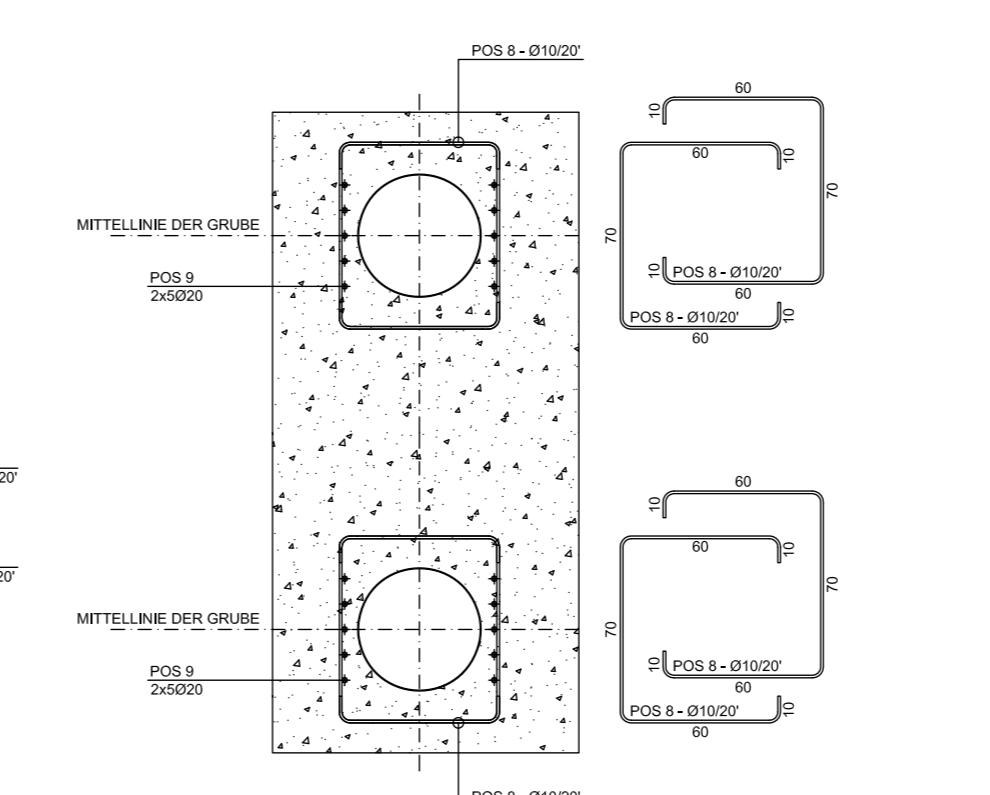
ABSCHNITT D-D



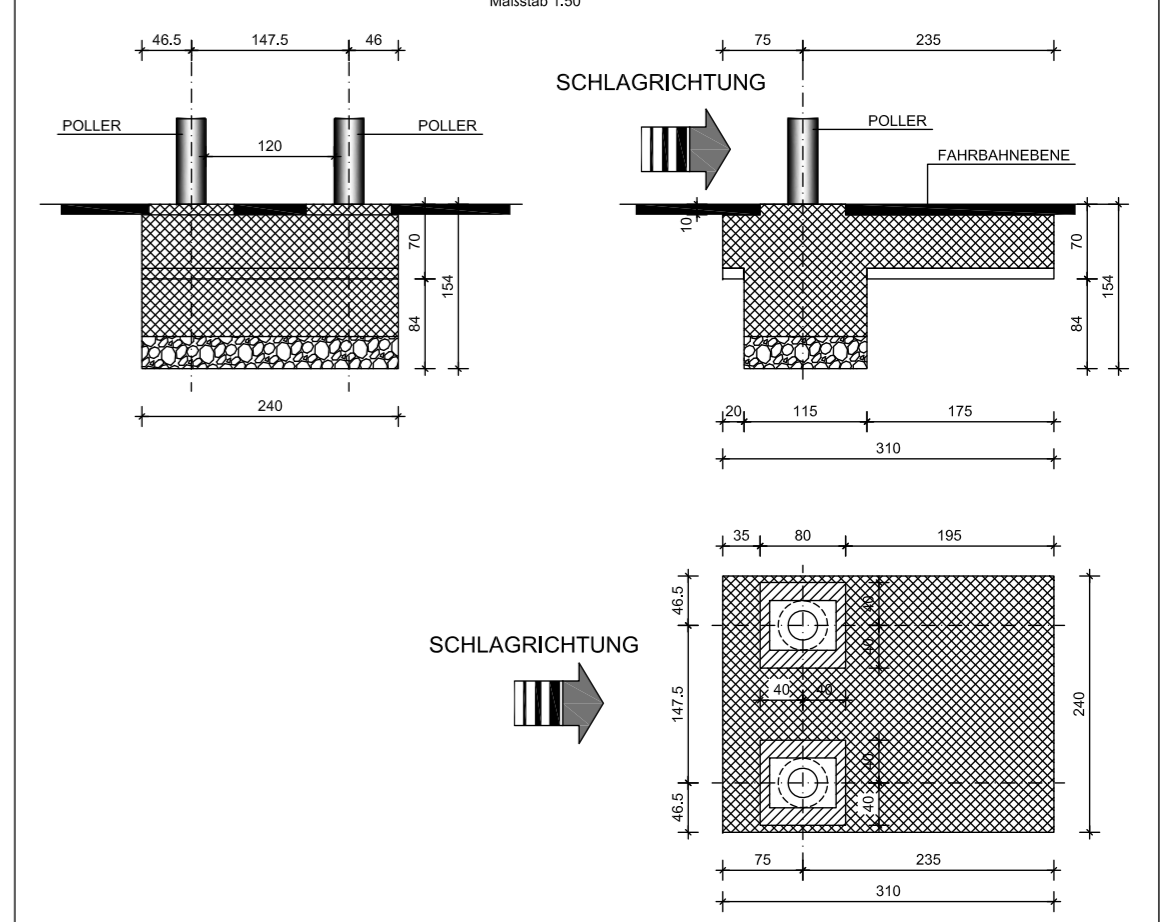
DRAUFSICHT



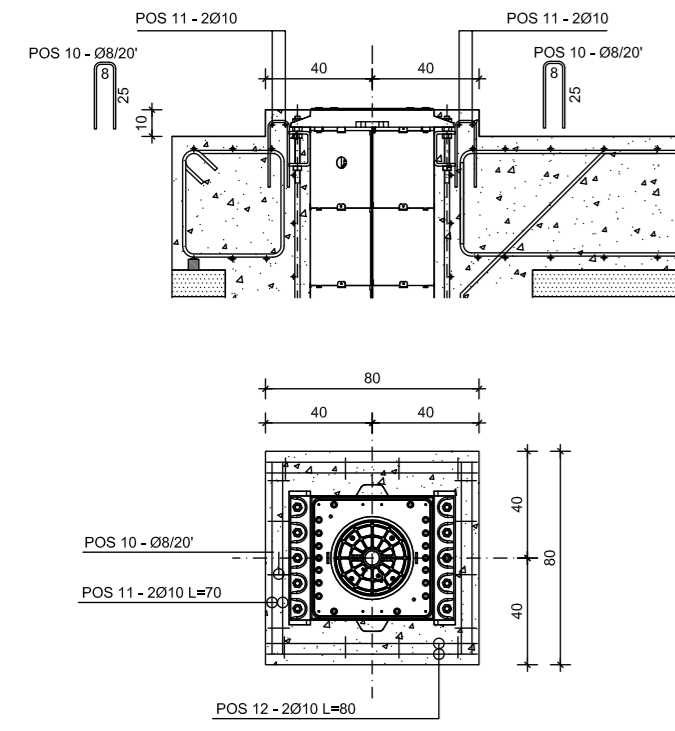
ABSCHNITT E-E



MASTERPLAN



POSITION DES OBEREN BUND-BEWERHUNGSSTABS



BEWEHRUNGSSTÄBELISTE				
Pos.	Anz.	φ	L (cm)	G (kg)
1	8	12	268	19,03
2	4	12	176	6,25
3	18	12	372	59,45
4	8	12	163	11,58
5	8	8	128	4,04
6	28	12	302	75,07
7	13	12	116	13,39
8	20	10	210	25,89
9	20	20	135	66,59
10	32	8	58	7,32
11	8	10	70	3,45
12	8	10	80	3,95
13	4	30	90	19,98
Bewehrungsgesamtgewicht				296,01

BETONVOLUMEN		
für Lehmplatte	m <sup>3</sup>	0,46
für Fundament	m <sup>3</sup>	5,27

AUSHUBVOLUMEN	m <sup>3</sup>	7,50
---------------	----------------	------

KIESVOLUMEN	m <sup>3</sup>	0,83
-------------	----------------	------

GEWICHT DER GRUBE	kg	85,00
-------------------	----	-------

MATERIALIEN + SPEZIFIKATIONEN

BETON								
	Widerstandsklasse	Zementart	Wasser/Zement-Verhältnis (Gewicht)	Konstanz slump (mm)	Expositionsklasse (EN206-1)	max. Gesamtdurchmesser	min. Bewehrungsüberdeckung (EC2)	Zusätze
MÄSSIGE EXPOSITION	C25/30	Portland 325/425	0.60	S4-160/210	XC2	20-25 mm	4,0 cm	Verdünner
STARKE EXPOSITION	C32/40	Portland 325/425	0.50	S4-160/210	XC2+XD2	20-25 mm	4,0 cm	Verdünner
LEHMPLATTENBETON	C12/15	Portland 325			X0	20-25 mm		

REIFEREGELN (UNI EN 13670-1:02)  
Entfernen der Schalung 48 Stunden  
Max. Beständigkeit 28 Tage

EISEN B500C - B450C oder N20  
Mindestabstand zwischen den Stangen = 35 mm

DIE BETONÜBERDECKUNG MUSS DURCH GEEIGNETE GITTERABSTANDHALTER GESICHERT WERDEN

ALLE ABMESSUNGEN MÜSSEN VOR BEGINN DER ARBEITEN VOR ORT ÜBERPRÜFT WERDEN

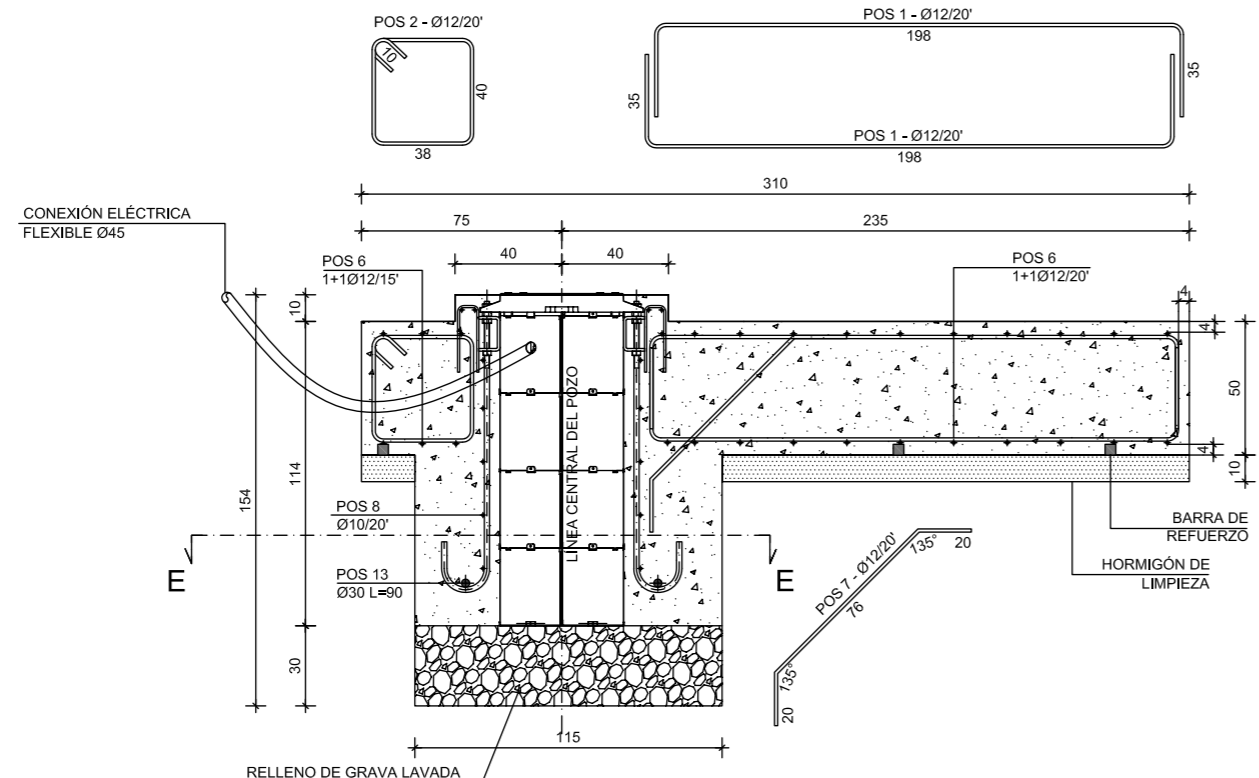
**FAAC**

Via Calari 10, Zola Predosa, Bologna, Italy  
Tel: +39 051-61724 Fax: +39 051-0957820

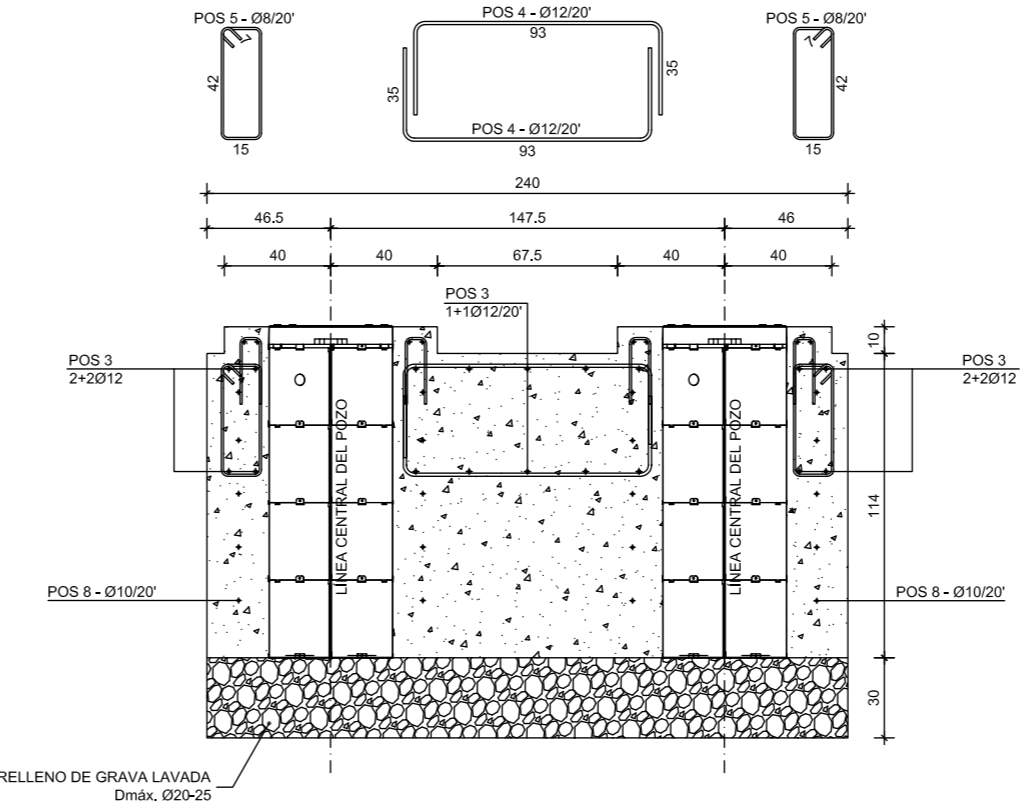
Description	Code	Revision
J275 HA 2K20 GRUBENFUNDAMENT	532379	A

**J275 HA 2K20  
ES**

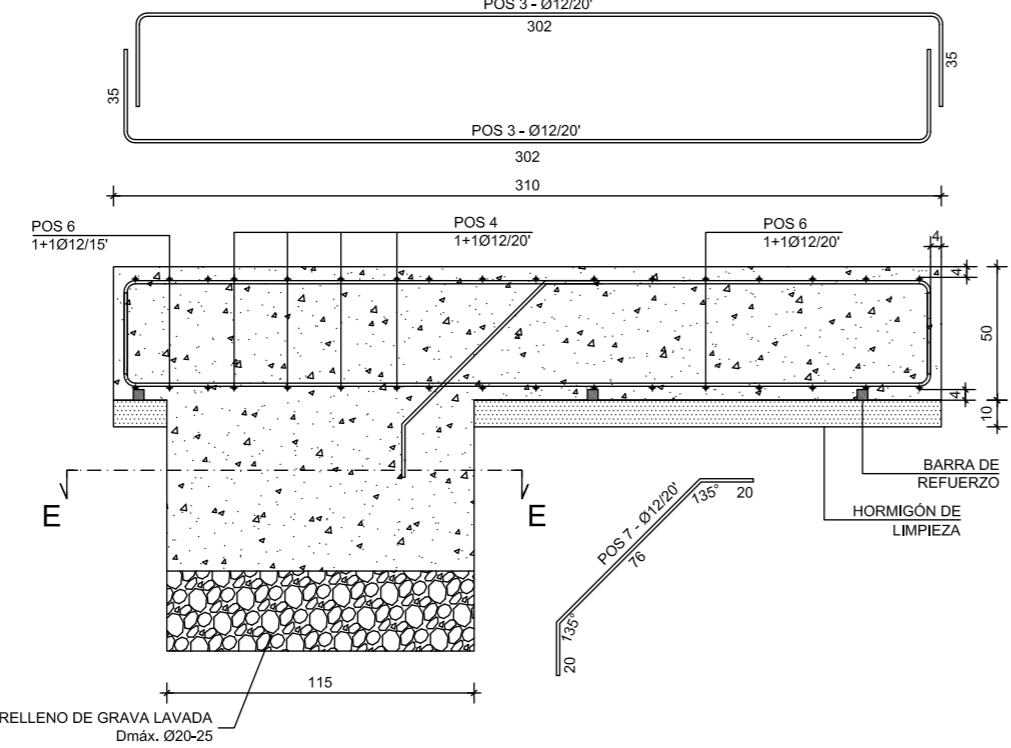
**SECCIÓN A-A**



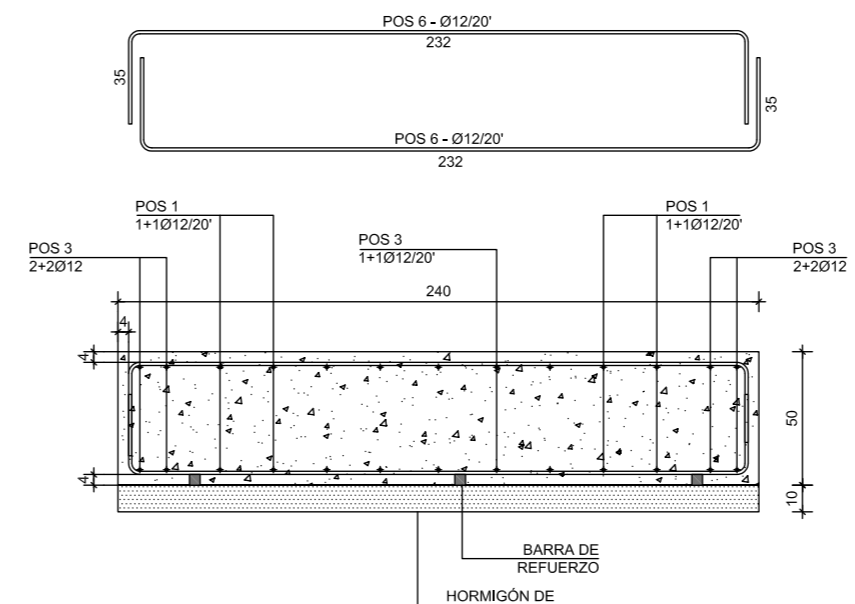
**SECCIÓN C-C**



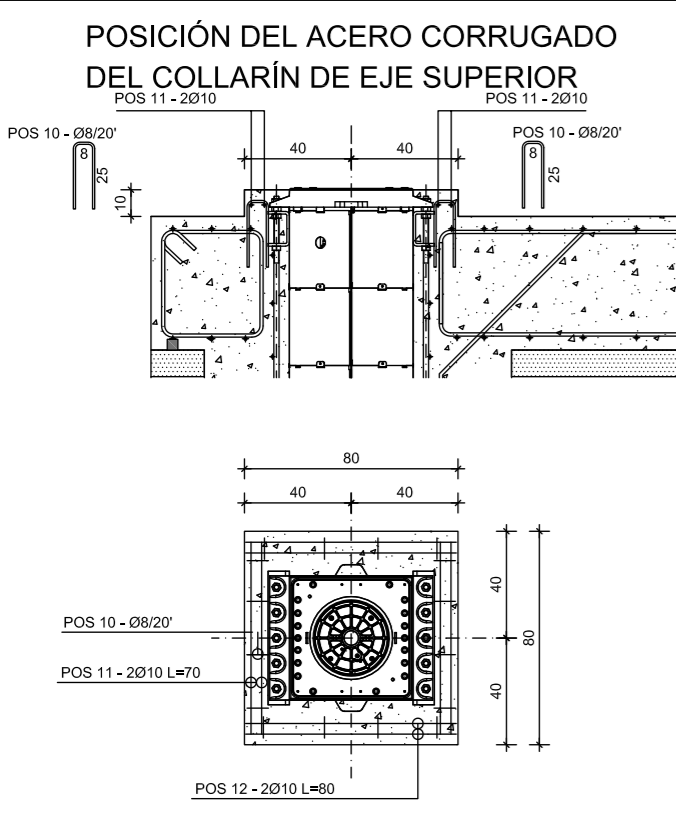
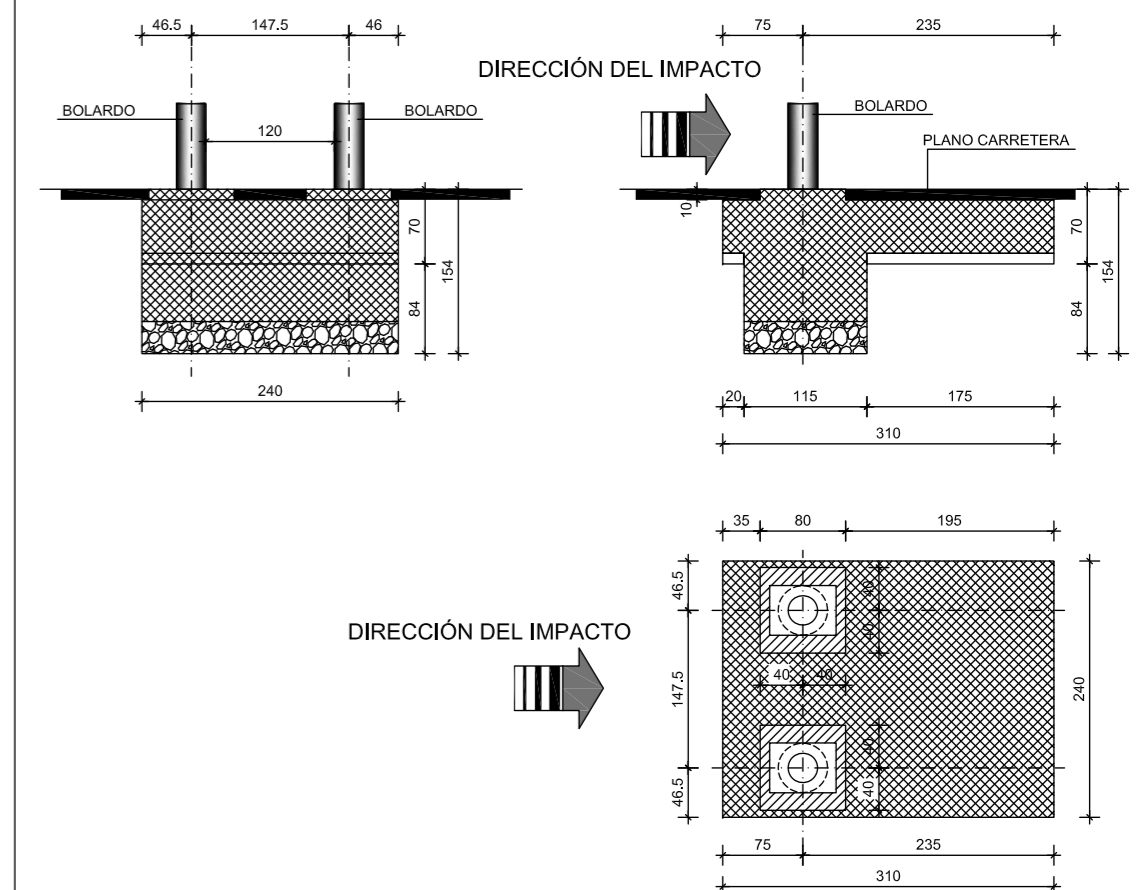
**SECCIÓN B-B**



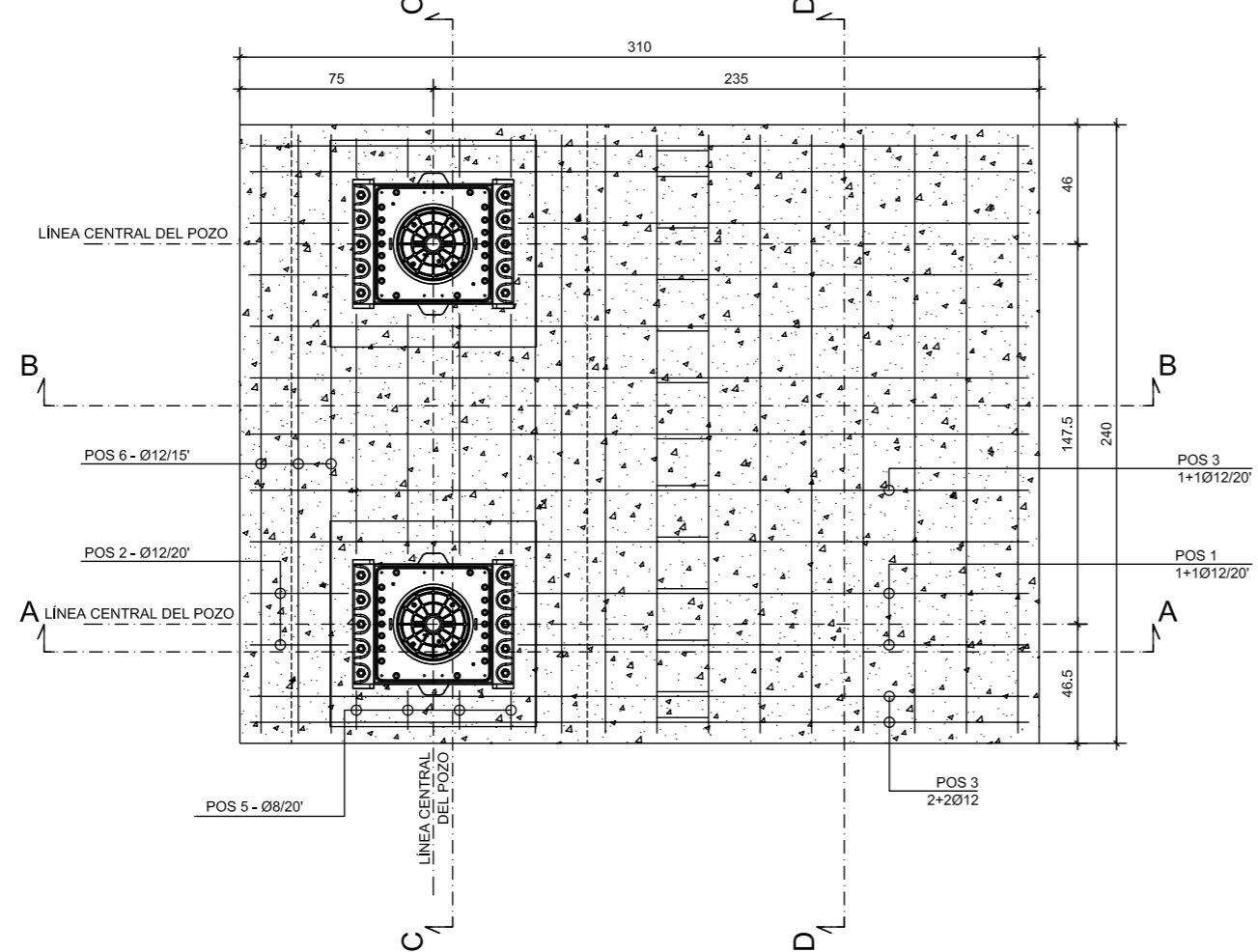
**SECCIÓN D-D**



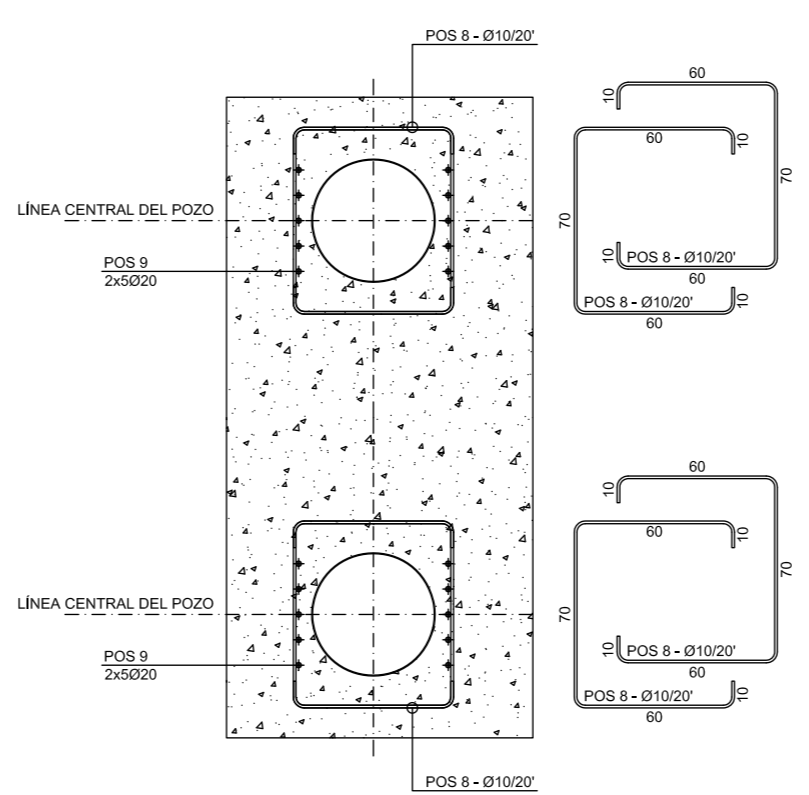
**PLANO GENERAL**  
escala 1:50



**VISTA PLANIMÉTRICA**



**SECCIÓN E-E**



**ESPECIFICACIONES DEL ACERO CORRUGADO**

pos.	n.º	φ	L (cm)	P (kg)
1	8	12	268	19,03
2	4	12	176	6,25
3	18	12	372	59,45
4	8	12	163	11,58
5	8	8	128	4,04
6	28	12	302	75,07
7	13	12	116	13,39
8	20	10	210	25,89
9	20	20	135	66,59
10	32	8	58	7,32
11	8	10	70	3,45
12	8	10	80	3,95
13	4	30	90	19,98
peso total del acero corrugado				296,01

**VOLUMEN DE HORMIGÓN**

	m³	
para hormigón de limpieza	0,46	
para cimentación	5,27	

**VOLUMEN DE EXCAVAC** m³ 7,50

**VOLUMEN DE GRAVA** m³ 0,83

**PESO DEL POZO** Kg 85,00

**MATERIALES + ESPECIFICACIONES**

**HORMIGÓN**

	Clase de resistencia	Tipo de cemento	proporción agua/cemento (peso)	Consistencia (mm)	Categoría de exposición (EN206-1)	Díametro máx. de áridos	recubrimiento máx. (EC2)	aditivos
EXPOSICIÓN MODERADA	C25/30	Portland 325/425	0,60	S4-160/210	XC2	20-25 mm	4,0 cm	disolvente
EXPOSICIÓN SEVERA	C32/40	Portland 325/425	0,50	S4-160/210	XC2+XD2	20-25 mm	4,0 cm	disolvente
LOSA DE HORMIGÓN DE LIMPIEZA	C12/15	Portland 325			X0	20-25 mm		

REGLAS DE MADURACIÓN (UNI EN 13670-1:02)  
 Tiempo de eliminación del encofrado: 48 horas  
 Resistance máx.: 28 días

**ACERO CORRUGADO**  
 HIERRO B500C - B450C o N20  
 Distancia mín. entre las barras = 35 mm

LOS RECUBRIMIENTOS DE HORMIGÓN DEBEN ASEGURARSE CON LOS SEPARADORES DE MALLA APROPIADOS

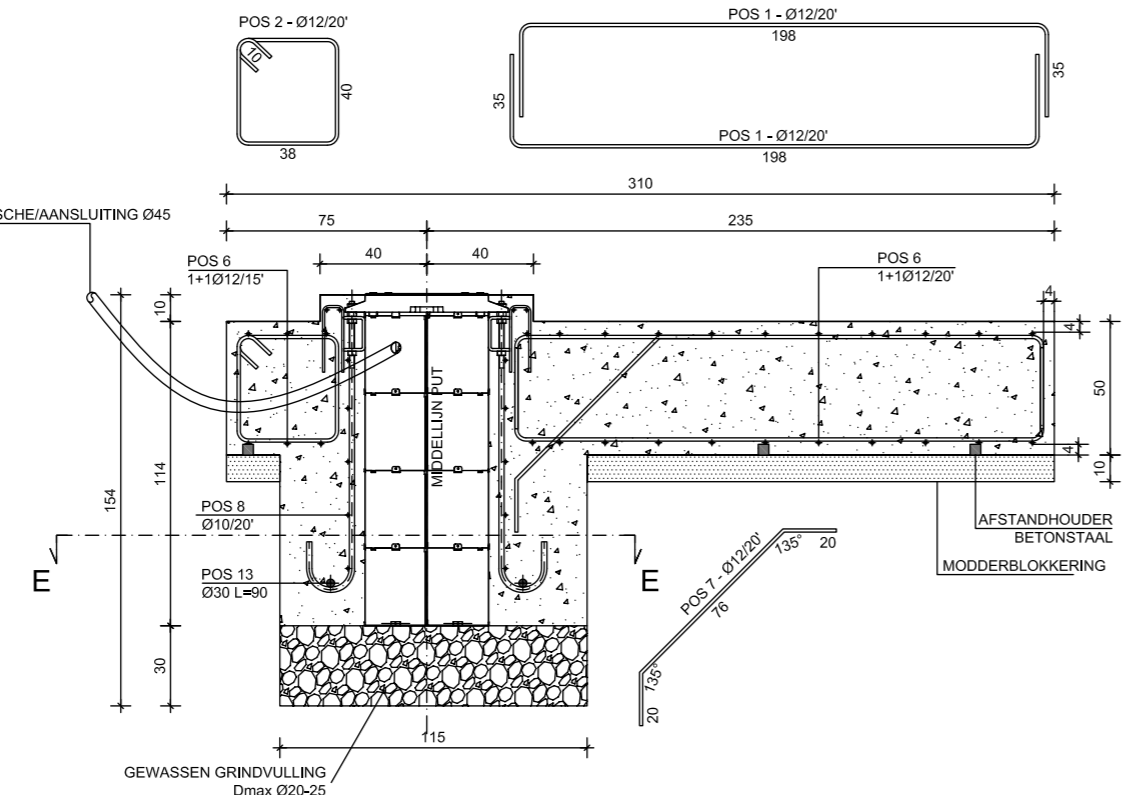
TODAS LAS DIMENSIONES DEBEN VERIFICARSE EN LA PÁGINA ANTES DE EMPEZAR LA OBRA

**FAAC** Via Calari 10, Zola Predosa, Bologna, Italy  
 Tel: +39 051-61724 Fax: +39 051-0957820

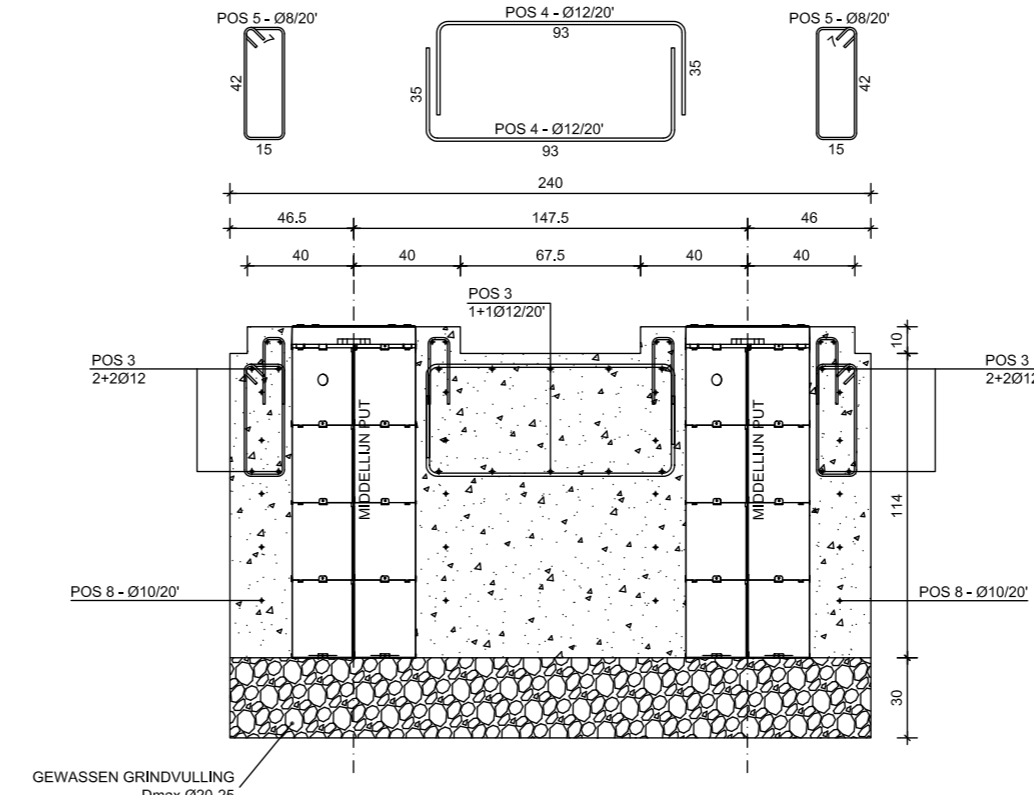
Description	Code	Revision
<b>J275 HA 2K20 CIMENTACIÓN DEL POZO</b>	<b>532379</b>	<b>A</b>

**J275 HA 2K20**  
NL

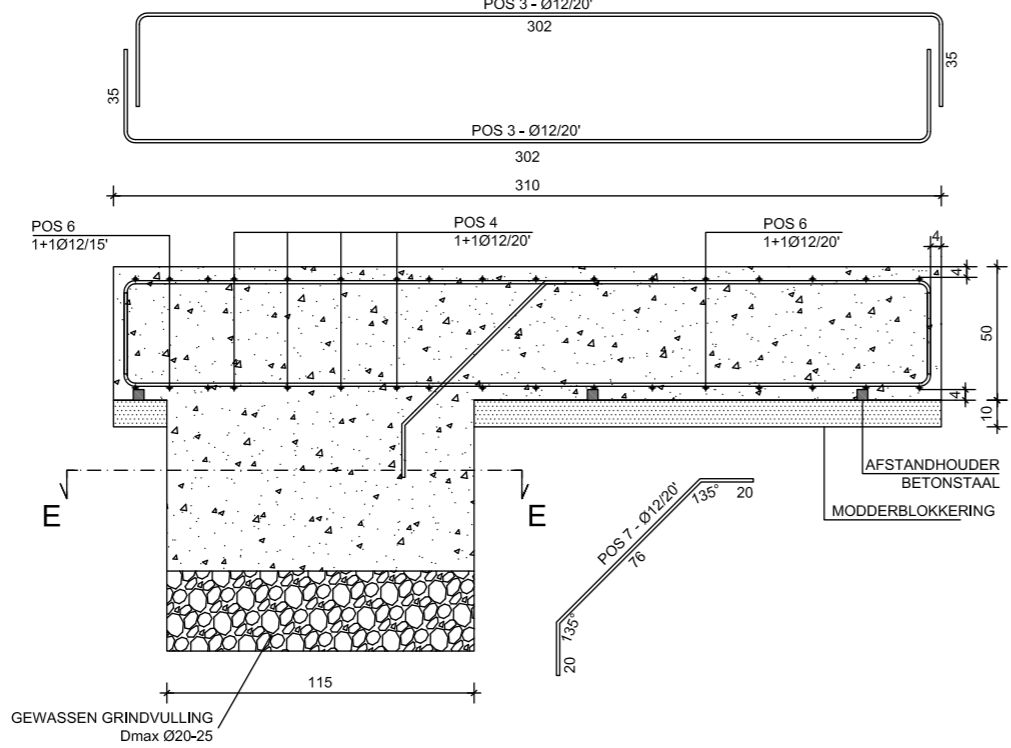
**DOORSNED E A-A**



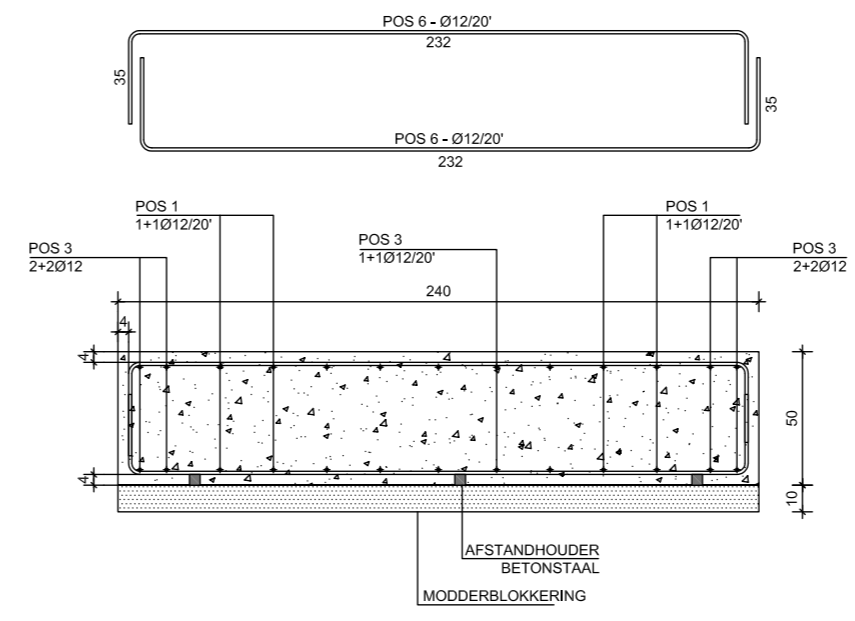
**DOORSNED E C-C**



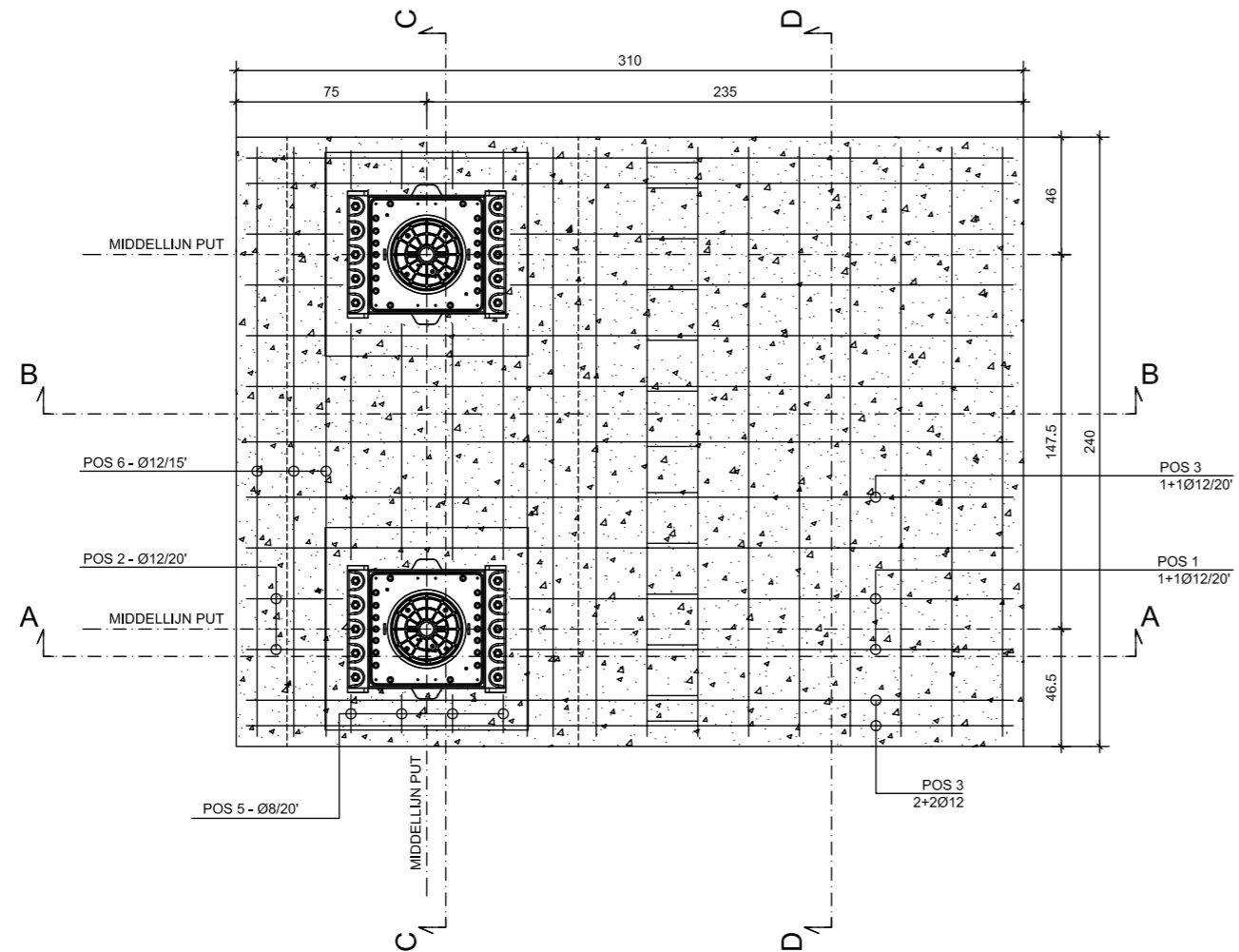
**DOORSNED E B-B**



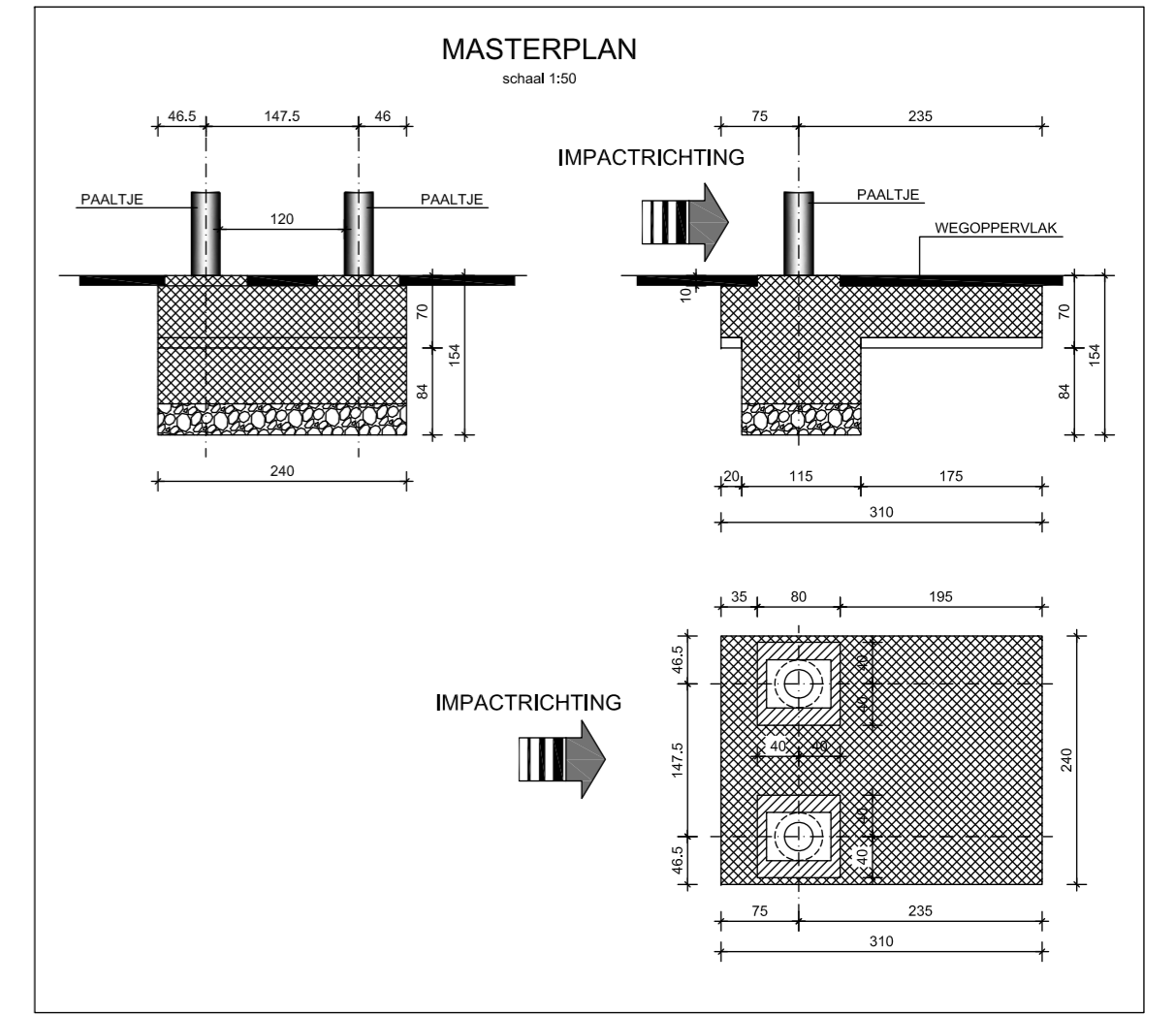
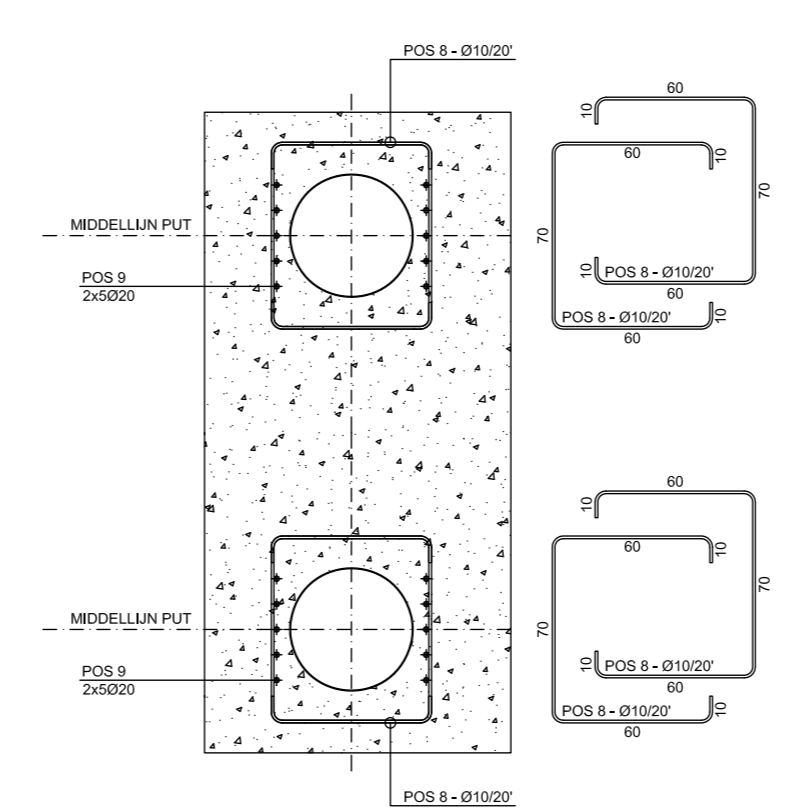
**DOORSNED E D-D**



**BOVENAANZICHT**

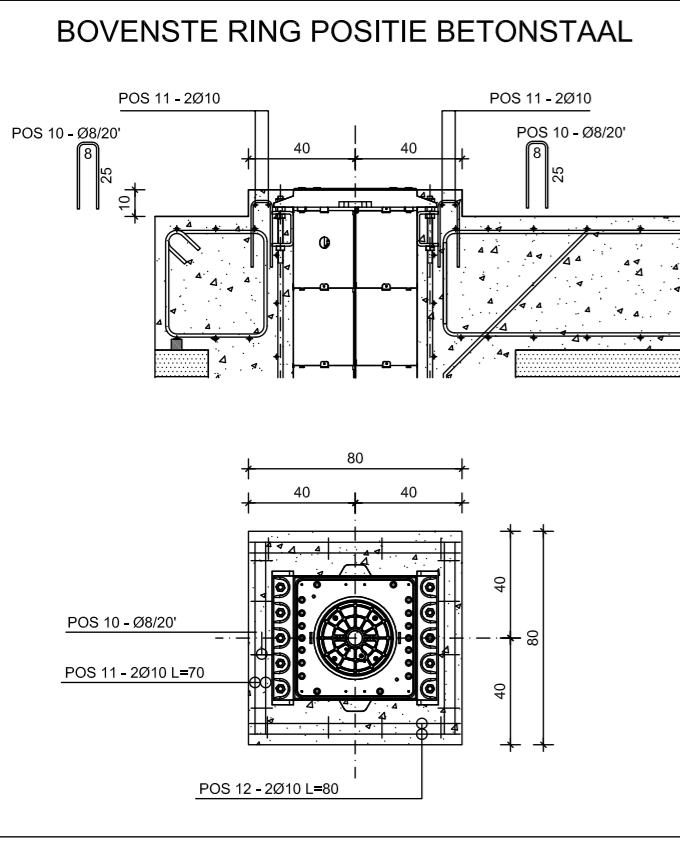


**DOORSNED E E-E**



LIJST BETONSTAAL				
pos.	nr.	φ	L (cm)	W (kg)
1	8	12	268	19,03
2	4	12	176	6,25
3	18	12	372	59,45
4	8	12	163	11,58
5	8	8	128	4,04
6	28	12	302	75,07
7	13	12	116	13,39
8	20	10	210	25,89
9	20	20	135	66,59
10	32	8	58	7,32
11	8	10	70	3,45
12	8	10	80	3,95
13	4	30	90	19,98
totaalgewicht betonstaal				296,01

BETONVOLUME		
	m <sup>3</sup>	
voor modderblokkering	0,46	
voor fundering	5,27	
<b>VOLUME UITGRAVING</b>	<b>7,50</b>	
<b>GRINDVOLUME</b>	<b>0,83</b>	
<b>GEWICHT VAN DE PUT</b>	<b>85,00</b>	



MATERIALEN + SPECIFICATIE								
BETON								
	Weerstandsklasse	Type cement	water/cement verhouding (gewicht)	Consistentie instorting (mm)	Blootstelling klasse (EN206-1)	max. aggregaat diameter	min. betonstaal afdekplaat (EC2)	additieven
MATIGE BLOOTSTELLING	C25/30	Portland 325/425	0.60	S4-160/210	XC2	20-25 mm	4,0 cm	thinner
ZWARE BLOOTSTELLING	C32/40	Portland 325/425	0.50	S4-160/210	XC2+XD2	20-25 mm	4,0 cm	thinner
BETONNEN MODDERBLOKKERING	C12/15	Portland 325			X0	20-25 mm		

DROOGVOORSCHRIFTEN BETON (UNI EN 13670-1:02)  
 Verwijderingstijd bekisting 48 uur  
 Max weerstand 28 dagen

BETONSTAAL  
 IJZER B500C - B450C or N20  
 Min. afstand tussen staven = 35 mm

BETONNEN AFDEKINGEN MOETEN MET GESCHIKTE RASTERS GEWAARBORG WORDEN

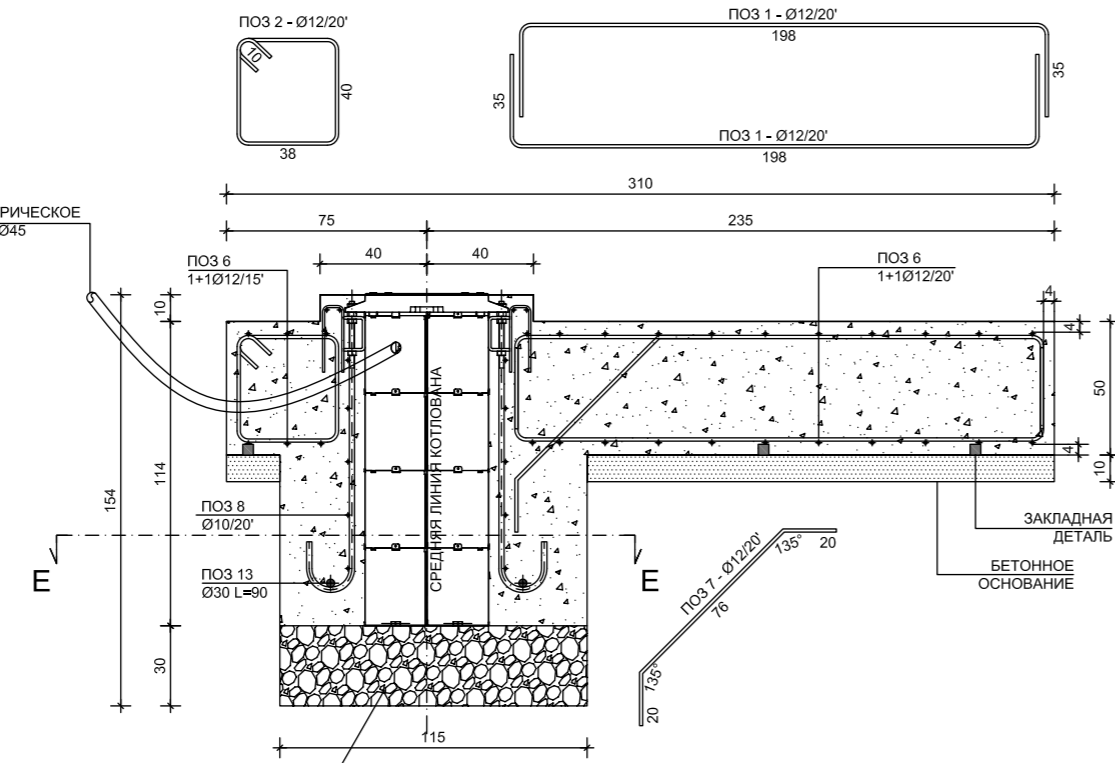
ALLE AFMETINGEN MOETEN TER PLAATSE GECONTROLEERD WORDEN, ALVORENS MET DE WERKZAAMHEDEN AAN TE VANGEN

**FAAC** Via Calari 10, Zola Predosa, Bologna, Italy  
 Tel: +39 051-61724 Fax: +39 051-0957820

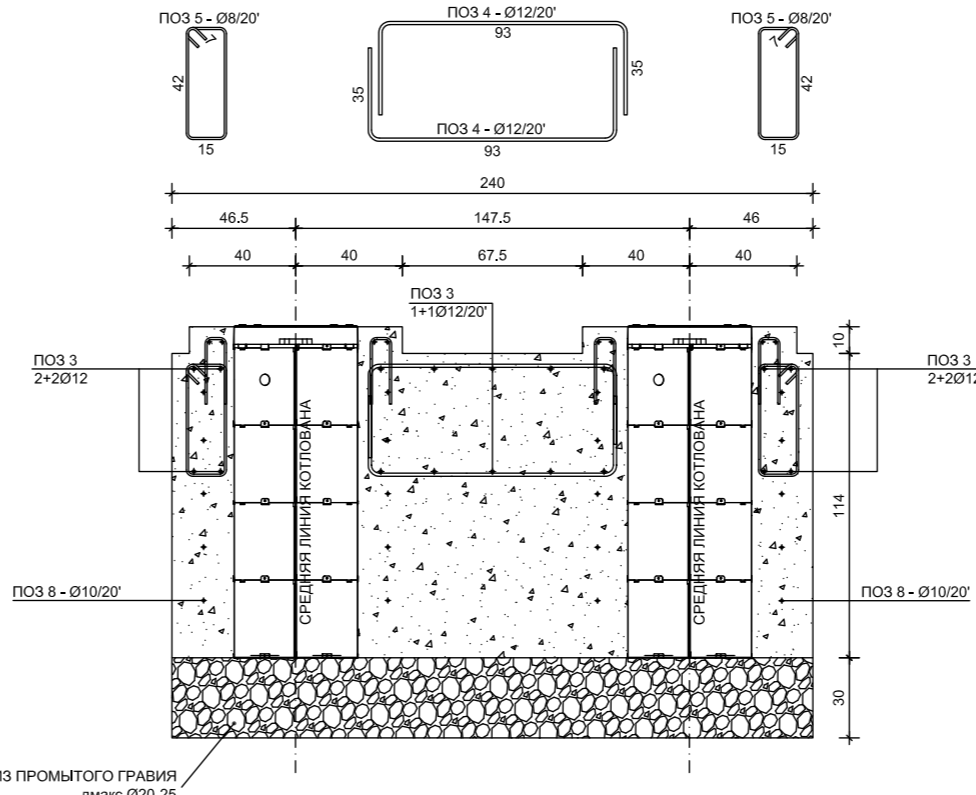
Description	Code	Revision
<b>J275 HA 2K20 FUNDERINGSPUT</b>	<b>532379</b>	<b>A</b>

**J275 НА 2K20**  
RU

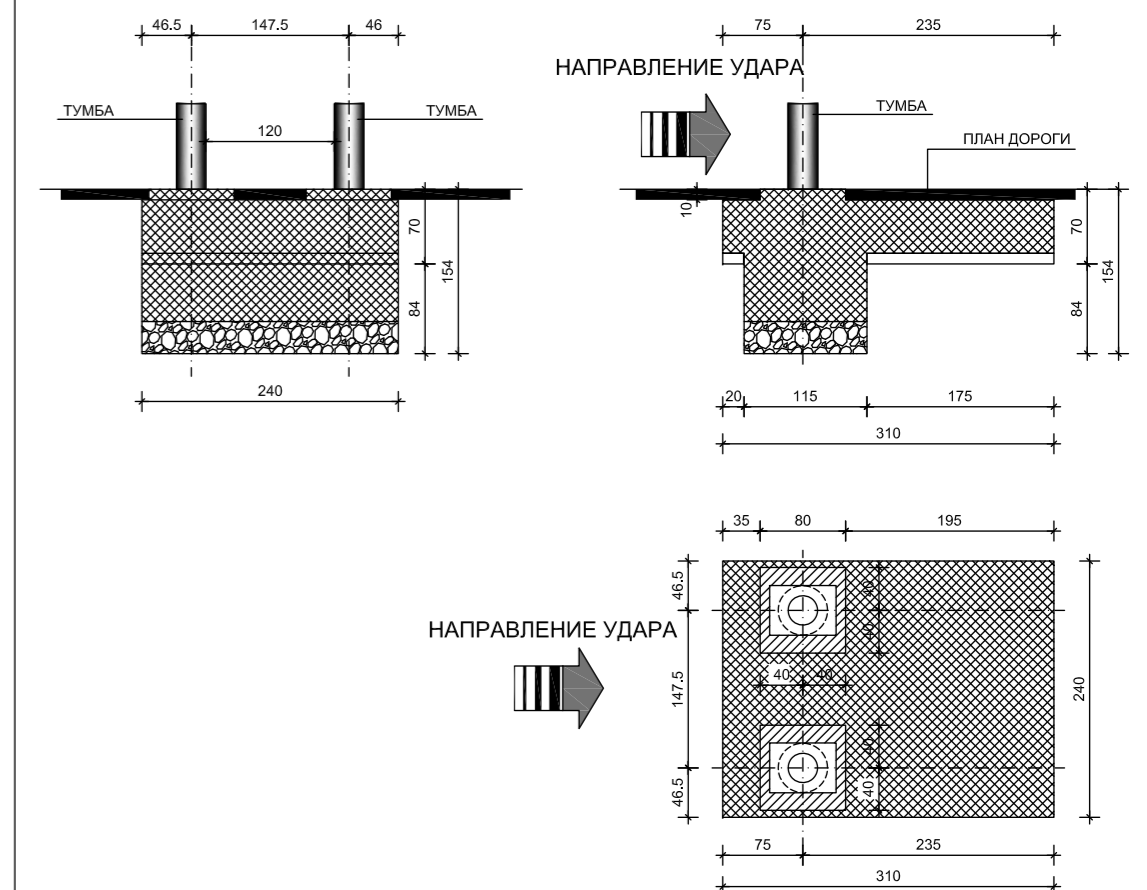
**СЕЧЕНИЕ А-А**



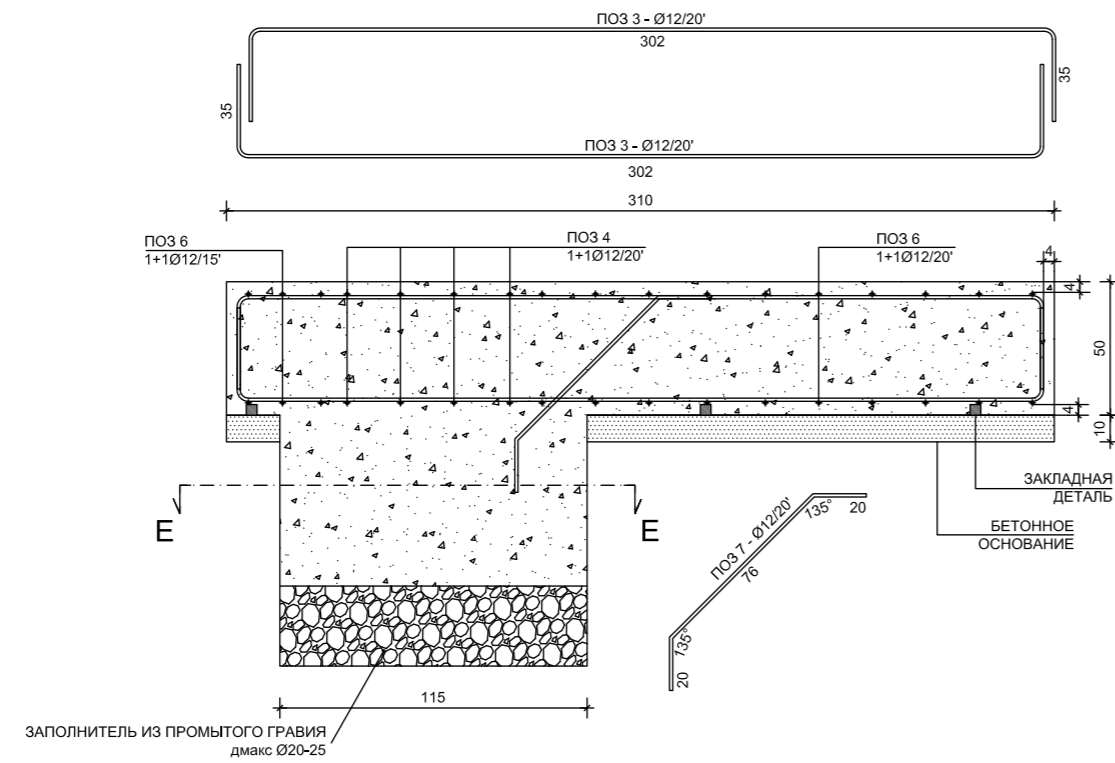
**СЕЧЕНИЕ С-С**



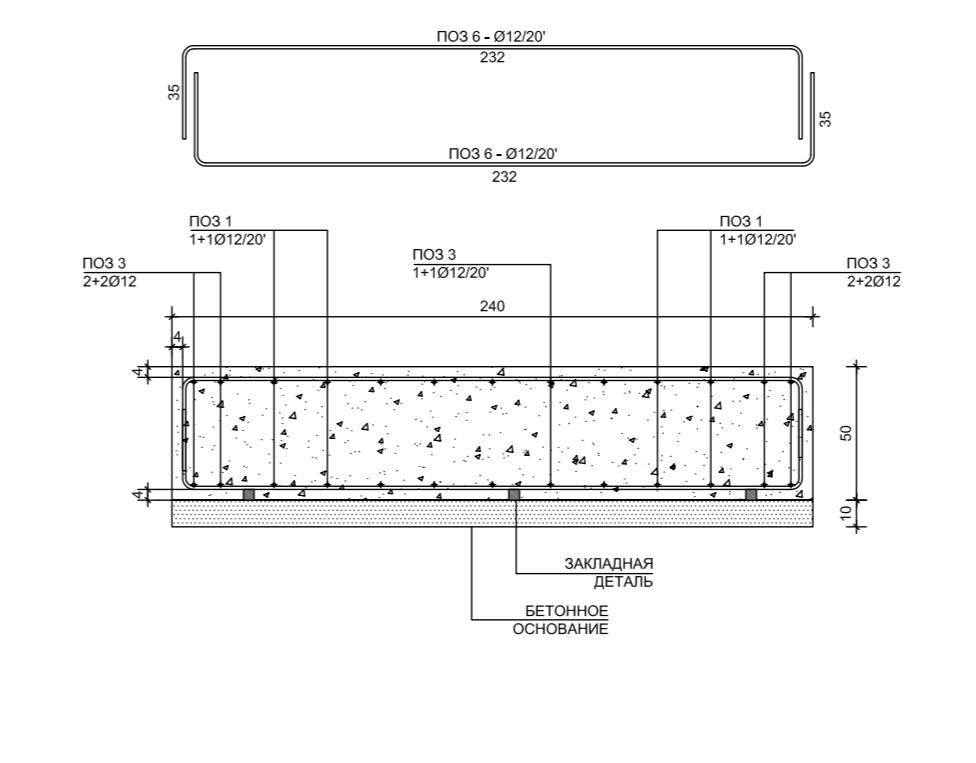
**ОБЩИЙ ПЛАН**  
масштаб 1:50



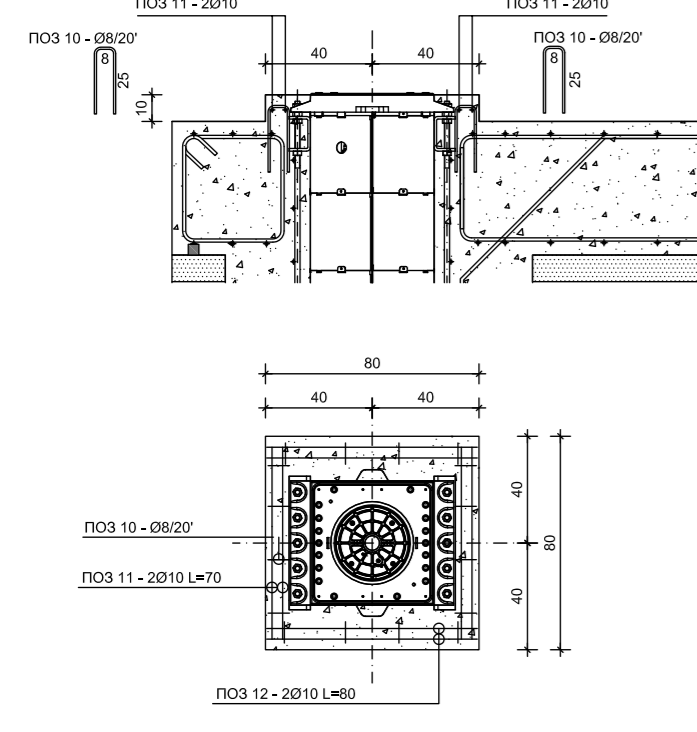
**СЕЧЕНИЕ В-В**



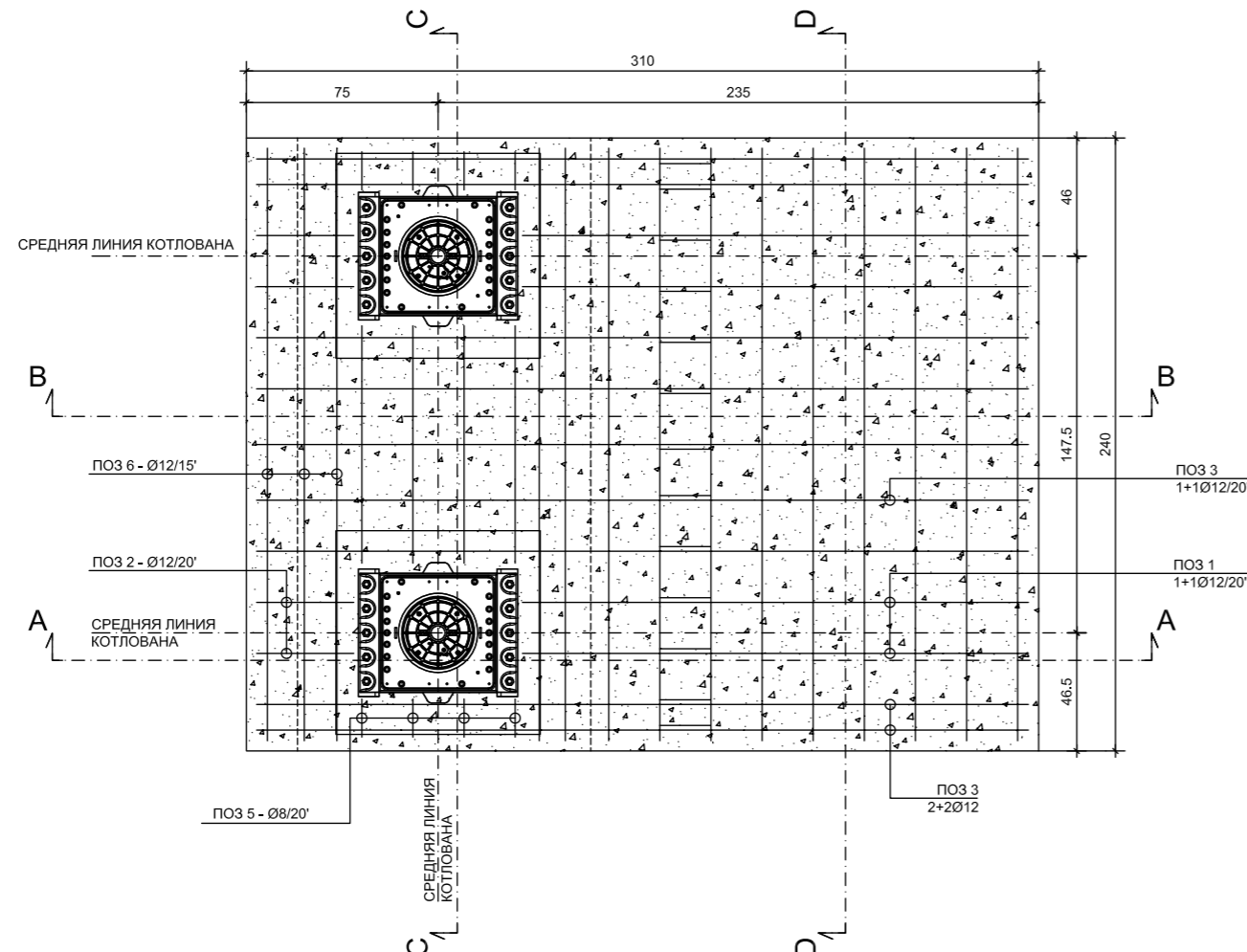
**СЕЧЕНИЕ D-D**



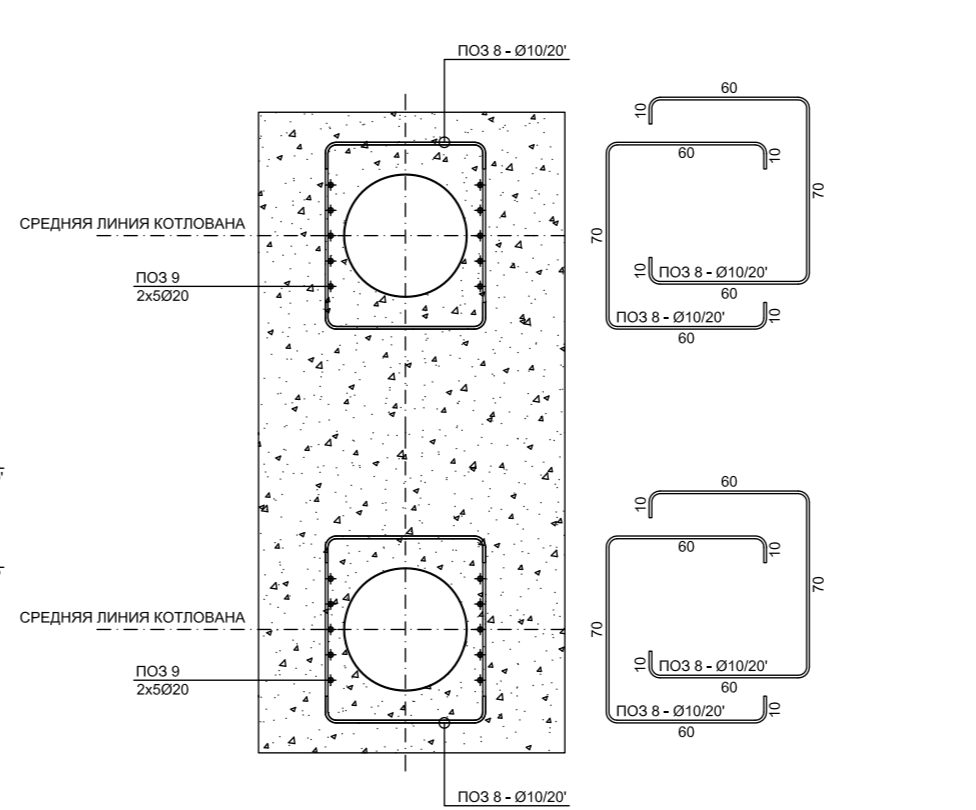
**ПОЛОЖЕНИЕ АРМАТУРЫ ВЕРХНЕГО ВОРОТНИКА**



**ВИД В ПЛАНЕ**



**СЕЧЕНИЕ Е-Е**



СПЕЦИФИКАЦИЯ АРМАТУРЫ				
пол.	№	φ	Дл (см)	Масса (кг)
1	8	12	268	19,03
2	4	12	176	6,25
3	18	12	372	59,45
4	8	12	163	11,58
5	8	8	128	4,04
6	28	12	302	75,07
7	13	12	116	13,39
8	20	10	210	25,89
9	20	20	135	66,59
10	32	8	58	7,32
11	8	10	70	3,45
12	8	10	80	3,95
13	4	30	90	19,98
общая масса арматурной стали				296,01

ОБЪЕМ ЦЕМЕНТА		
для бетонного основания	куб.м.	0,46
для фундамента	куб.м.	5,27

ОБЪЕМ ЗЕМЛЯНЫХ РА		
	куб.м.	7,50

ОБЪЕМ ГРАВИЯ		
	куб.м.	0,83

ОБЪЕМ ЩЕБНЯ		
	Кг	85,00

**МАТЕРИАЛЫ + ТЕХНИЧЕСКИЕ ТРЕБОВАНИЯ**

БЕТОН								
	Класс сопротивления	Тип цемента	водо-цементное соотношение (вес)	Сонсистенция бетонной смеси (мм)	Класс водостойкости (EN206-1)	макс. диаметр зерен заполнения	макс. толщина проката для армирования бетона (БСЖ)	добавки
УМЕРЕННОЕ ВОЗДЕЙСТВИЕ	C25/30	Портланд 325/425	0,60	S4-160/210	XC2	20-25 mm	4,0 см	разбавитель
СЕРЬЕЗНОЕ ВОЗДЕЙСТВИЕ	C32/40	Портланд 325/425	0,50	S4-160/210	XC2+XD2	20-25 mm	4,0 см	разбавитель
БЕТОННОЕ ОСНОВАНИЕ	C12/15	Портланд 325			X0	20-25 mm		

НОРМЫ СОЗРЕВАНИЯ (UNI EN 13670-1:02)  
Срок снятия опалубки 48 часов  
Макс. сопротивление 28 дней

АРМАТУРНАЯ СТАЛЬ

**ЖЕЛЕЗО В500С - В450С или N20**  
Мин. расстояние между балками = 35 мм

ЗАЩИТНЫЙ СЛОЙ БЕТОНА ДОЛЖЕН ПОДДЕРЖИВАТЬСЯ ПОДХОДЯЩИМИ СЕТЧАТЫМИ ПРОКЛАДКАМИ

ВСЕ РАЗМЕРЫ ДОЛЖНЫ ВЫВЕРЯТЬСЯ НА МЕСТЕ ПЕРЕД НАЧАЛОМ РАБОТ



Via Calari 10, Zola Predosa, Bologna, Italy  
Tel: +39 051-61724 Fax: +39 051-0957820

Description	Code	Revision
<b>J275 НА 2K20 ШАХТНЫЙ ФУНДАМЕНТ</b>	<b>532379</b>	<b>A</b>