



Lange Straße 4 35781 Weilburg Germany
Tel: 06471 / 3109-0 Fax: 06471 / 3109-99
www.feig.de Email: info@feig.de

INFO-Schrift VEK

- Installation of the MNE Servicesoftware

A._30
MNE_x

Issue: How to install the Servicesoftware „VEK MNE V_{x.x.x}„

The Servicesoftware „VEK MNE_x Servicesoftware V_{x.x.x}“ must be installed on a PC.

For this you have to **extract** the Zip File „VEK MNE_x Service Software V_{x.x.x}“.

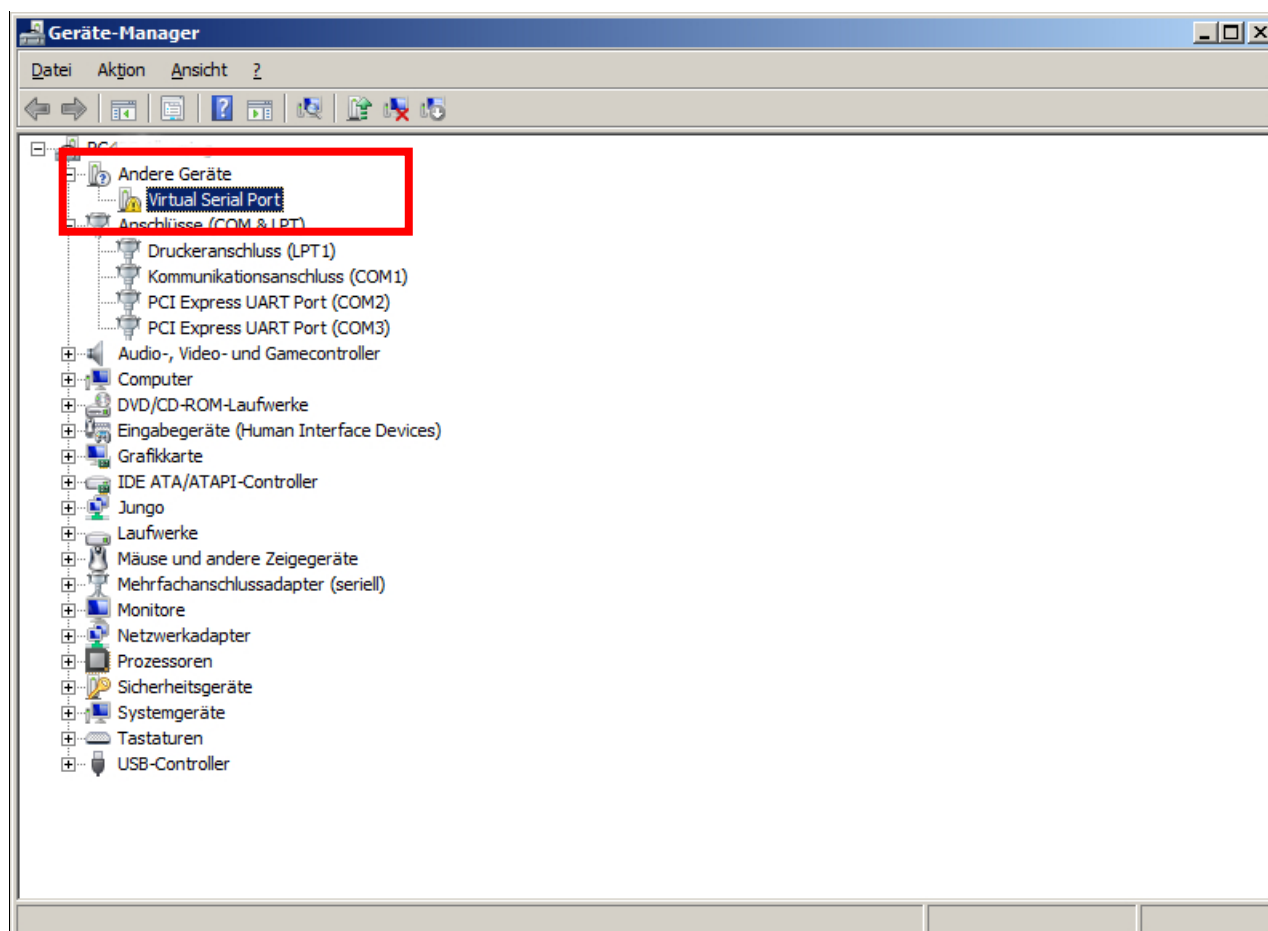
At the next step you open the File „Installer“ and then the File „Volume“.

There you find the File „setup“ please start it with a double click.

Then connect the MNE - Detektor with a USB interface cable to the PC..

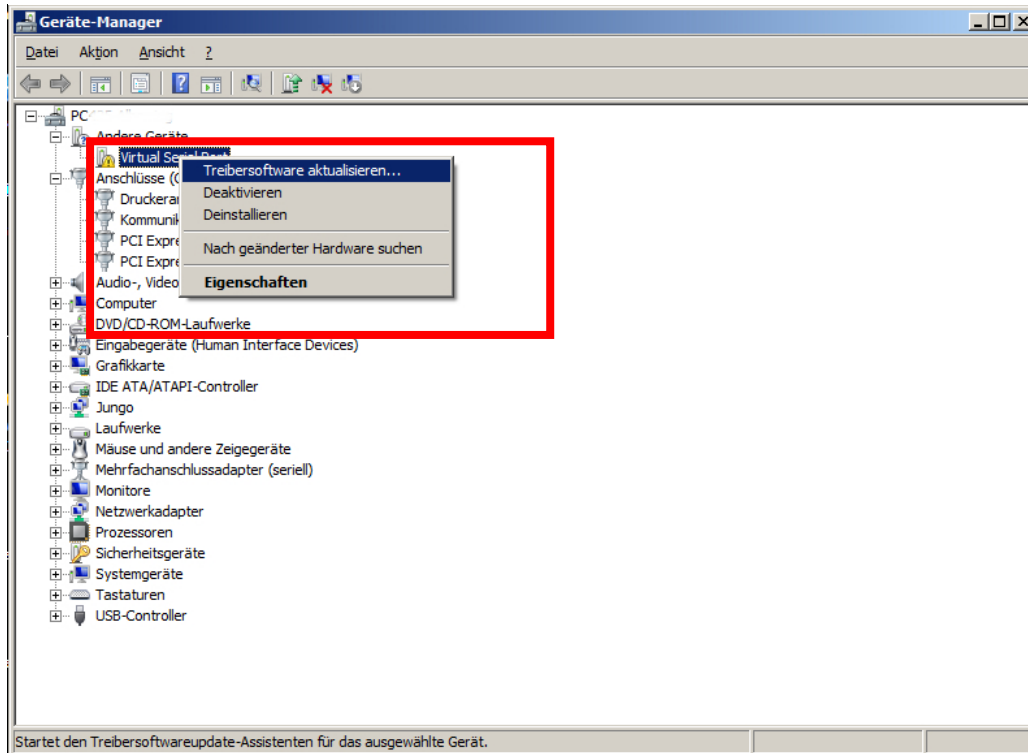
If Windows 7 did not find the Driver to connect the Detector to the PC, the Driver must be installed separate.

Here you find, how to install the Driver manually.

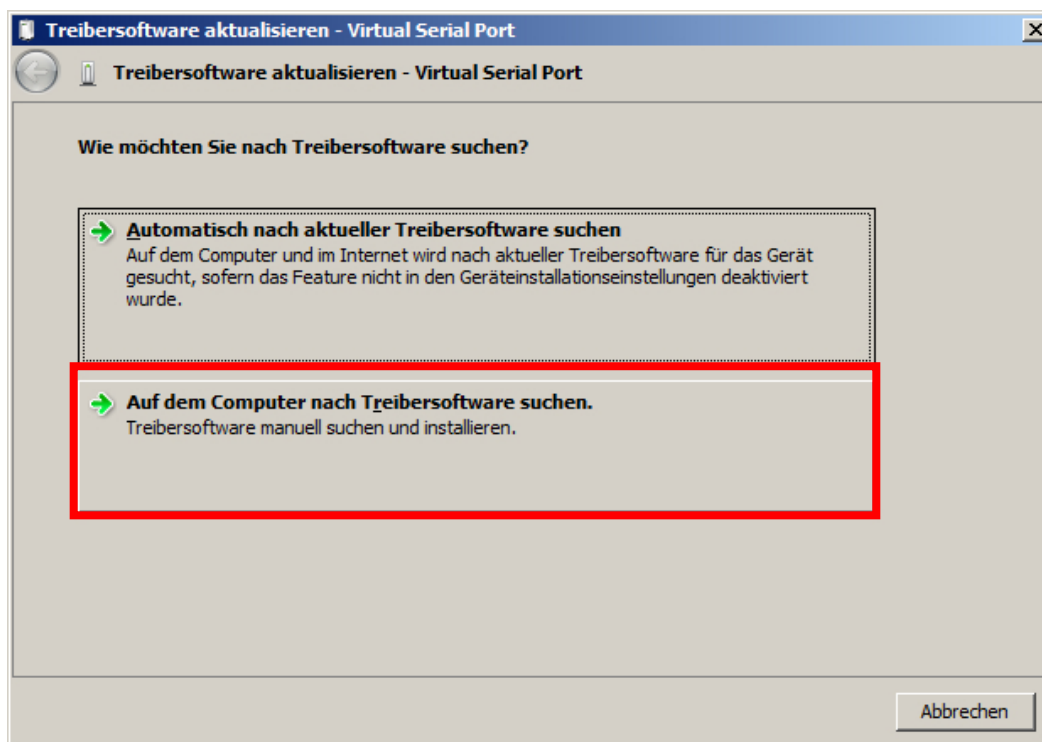


If the detector is not recognized because the driver was not installed correctly,
the detector is shown as a Virtual Serial Port.

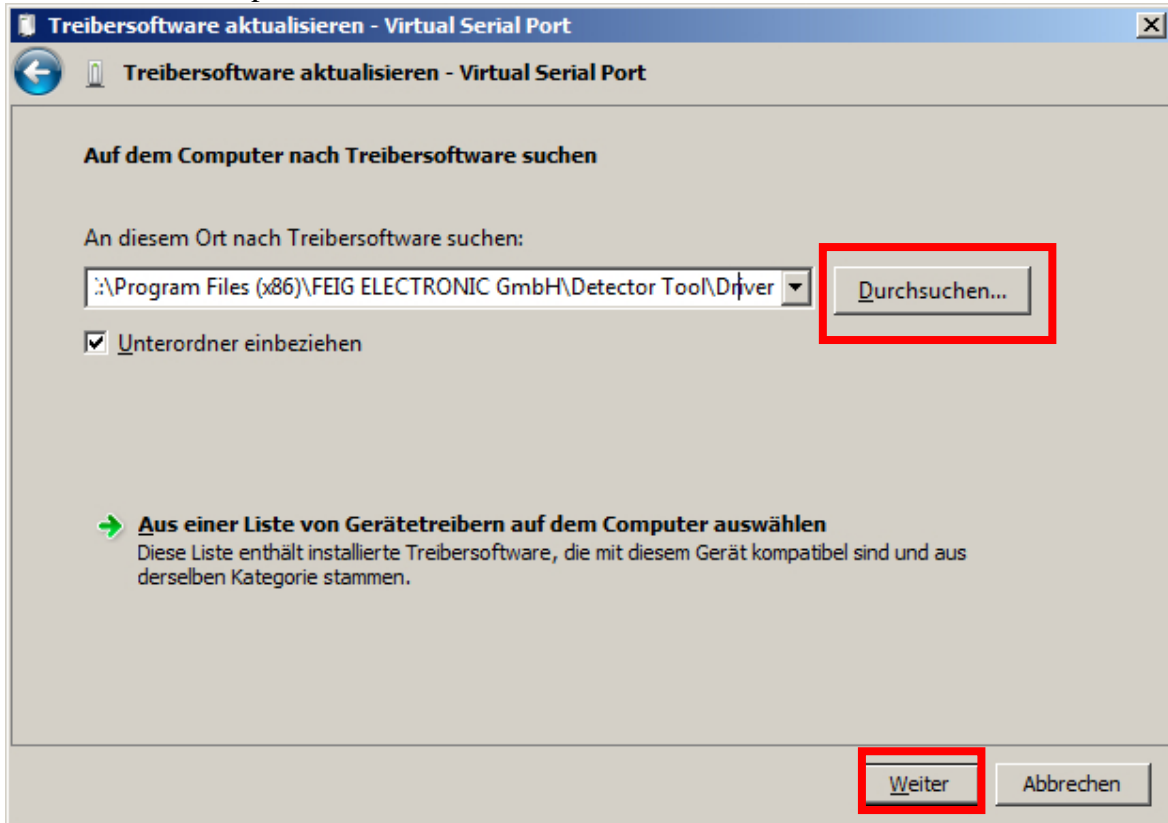
In this case, the driver needs to be updated!
Right click on the device -> Driver software Update



The software must be searched manually on the PC.



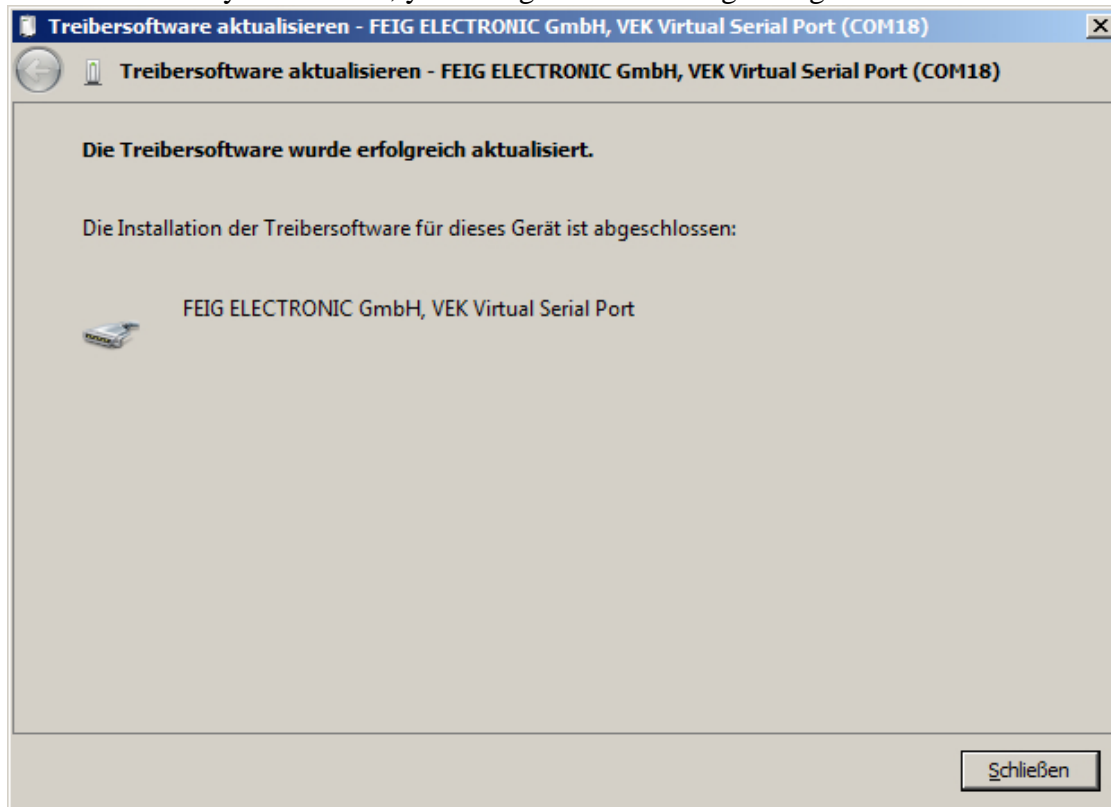
The driver is installed in the installation path of the detector tools under Driver.
Select a folder and press OK.



It's possibly that Windows gives an indication that the driver is not signed.
Install the software anyway .

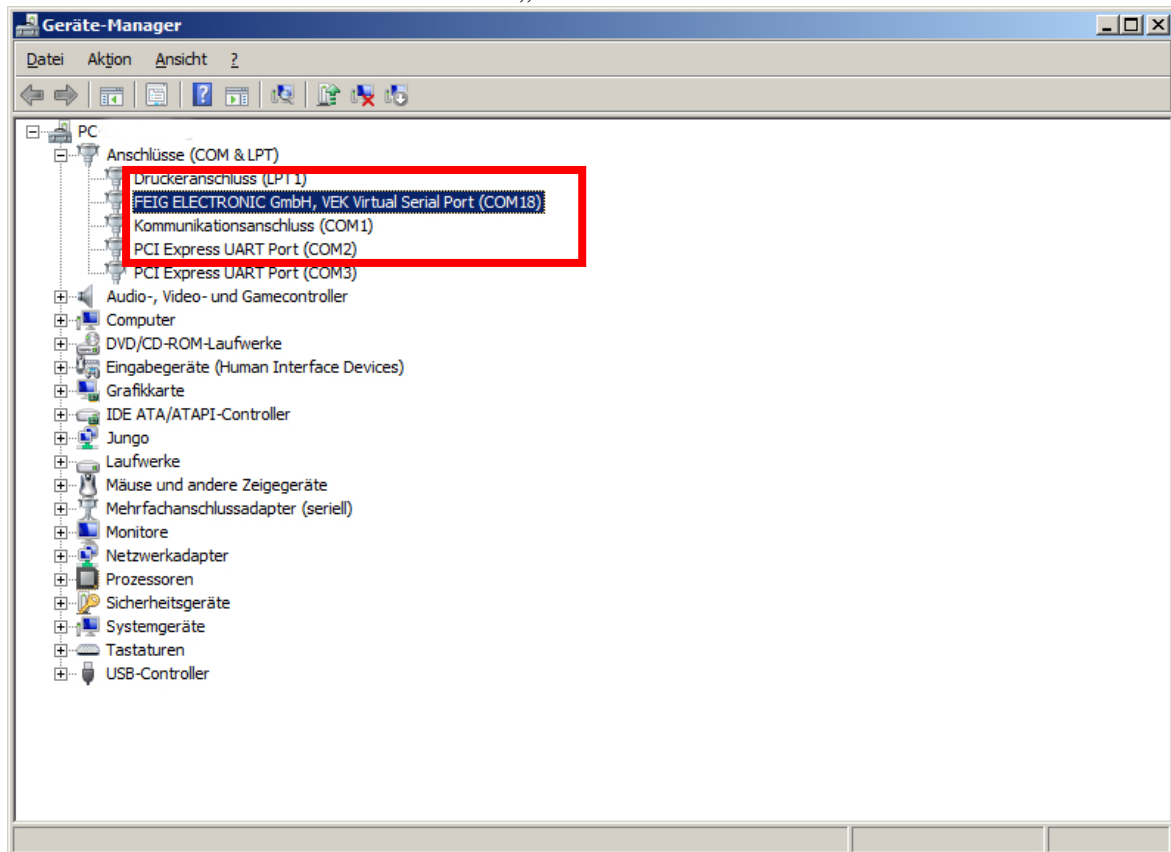


After successfully installation, you will get the following dialog.

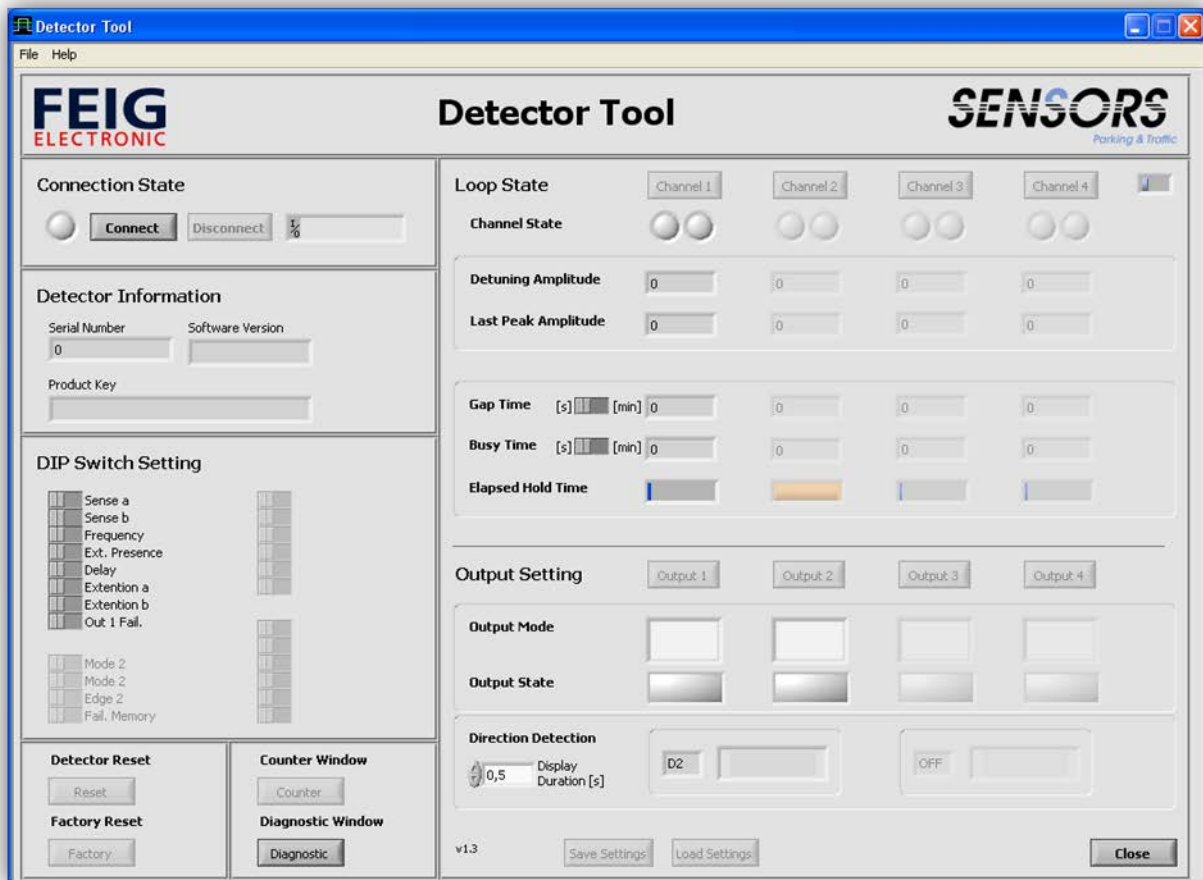


You can find the assigned COM port now under Ports (COM & LPT)
The unit can be used now.

The Com-Port no. must be used in the „Detector Tool“ mask.



Input the Com Port no. in the Detector Tool Mask.



Connection State



In this area with the headline "**Connection State**" there you see the actual connection status of the connected Detector.

If the LED is green  and behind the Sign $\frac{I}{O}$ is a COM-Port (e.g. COM4), than the programm is connected.

If the LED is grey , than is there no Connection to the Detector.

In that case you can make a click on the **Connect Button** and the program is searching for a detector.

When now a detector was found, the programm connect automatically.

If there was no automatically Connection, you can deactivate the Auto connection and make a manual search for the

COM-Port .

For this you make a click in to the task bar to **Connection** and deactivated **Autoconnect**.

Than make a click to the **Connect button**, now you can fill in the COM Port no. manual.

If you want to quit the Connection between PC and Detector make a click to the **Disconnect Button**.